

# OPTIONAL COLLECTION

---







**Quality, craftsmanship and innovation.  
The secret lies in precision. Having clear ideas is vital:  
we need to know where we want to go and what we want to create.  
And at Magni, we throw our all into accomplishing it.**

**Riccardo Magni – President**

---

Magni Telescopic Handlers was founded in 2013. Thus, began the development of the widest range of rotating telescopic handlers on the market; from rotating telescopic handlers to fixed, heavy-duty models and construction fixed boom telehandlers. Italy was no longer enough and so six further branches have been set up: Magni TH France, Magni UK, Magni America, Magni Deutschland, Magni SA and Magni Asia Pacific. To offer our clients the best technical and commercial service around, we have created a network of over 300 dealers, a number that is constantly increasing. And that is just the beginning of our story.

# OPTIONAL COLLECTION



## 01

### CARE & COMFORT

---

**Magni** gives full attention to operator comfort. Small details are the proof that **Magni** put all its efforts into having the maximum results of care and construction precision.

PAG. 06

## 02

### PERFORMANCE & WORKING EXPERIENCE

---

Everything revolves around excellent performances that make using a **Magni** a unique experience. An experience where the operator is the center, who will be able to do his best during working hours.

PAG. 24

# 03

## SAFE & SECURE

---

Safety at **Magni** means products that comply with the latest regulations on health and safety in any working place and building site.

PAG. 46



# 04

## ROAD & TRAFFIC POLICY

---

To be always up to date with the different countries regulations, **Magni** has a solution for each need.

PAG. 64

# 05

## SPECIAL

---

For each special application **Magni** has the right solution, that allow you to do the job in complete safety and enhance the machine's performances.

PAG. 70



**MAGNI**

**MAGNI**

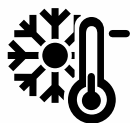
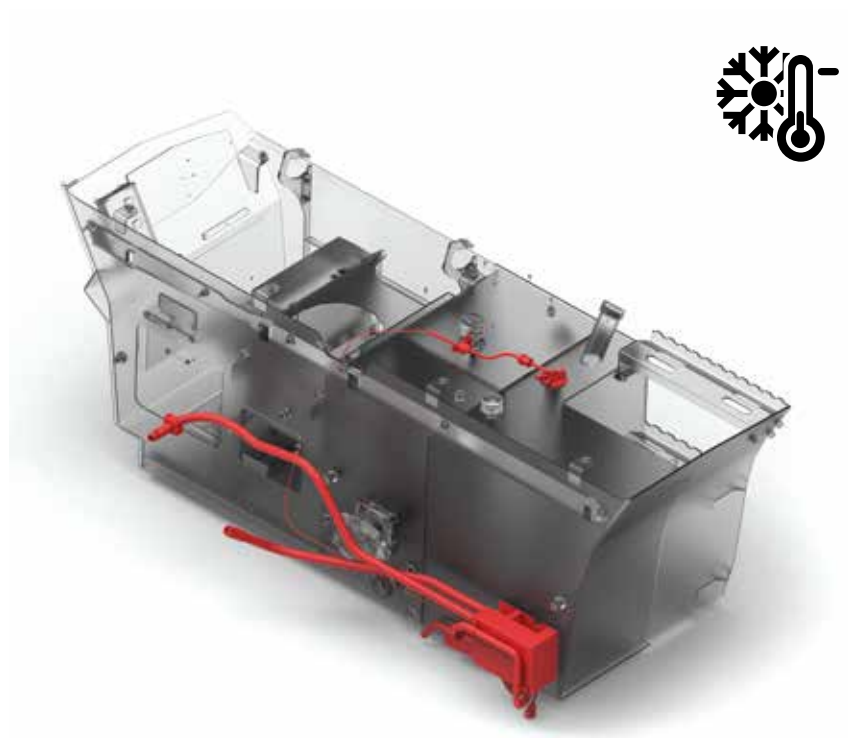




---

## CARE & COMFORT

**Magni** gives full attention to operator comfort. Small details are the proof that **Magni** put all its efforts into having the maximum results of care and construction precision.



## ADDITIONAL HEATER 24 V (EBERSPÄCHER)

*OPT-01-002*

Option composed of a programmable auxiliary burner which allows the cab to be heated in cold weather in order to improve operator comfort.

**Existing kit**

**RTH - HTH - TH**



## REMOTE CONTROL FOR ADDITIONAL HEATER 24 V (EBERSPÄCHER)

*OPT-01-003*

An additional option to make cab pre-heating even more practical and functional by allowing remote operation.



**Existing kit**

**RTH - HTH - TH**



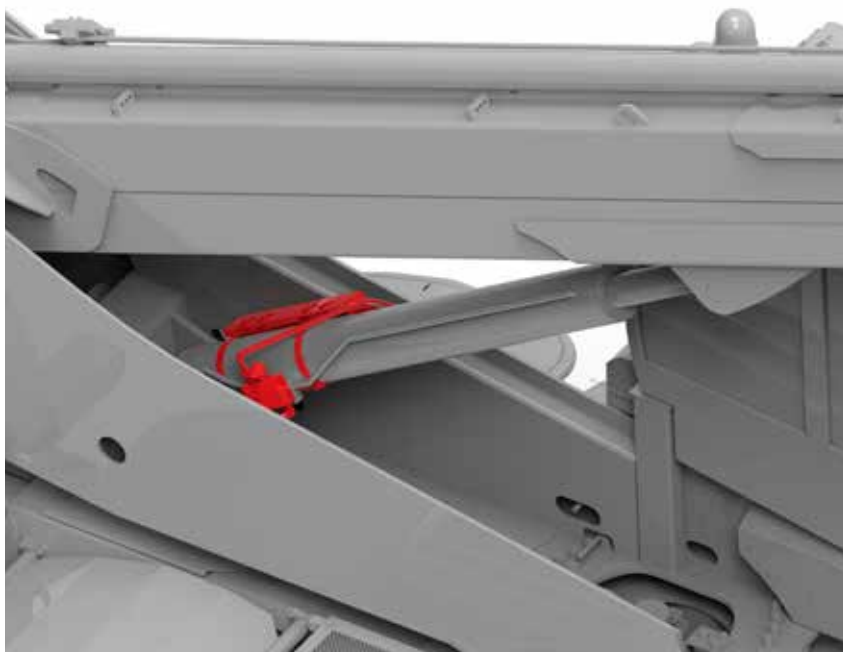


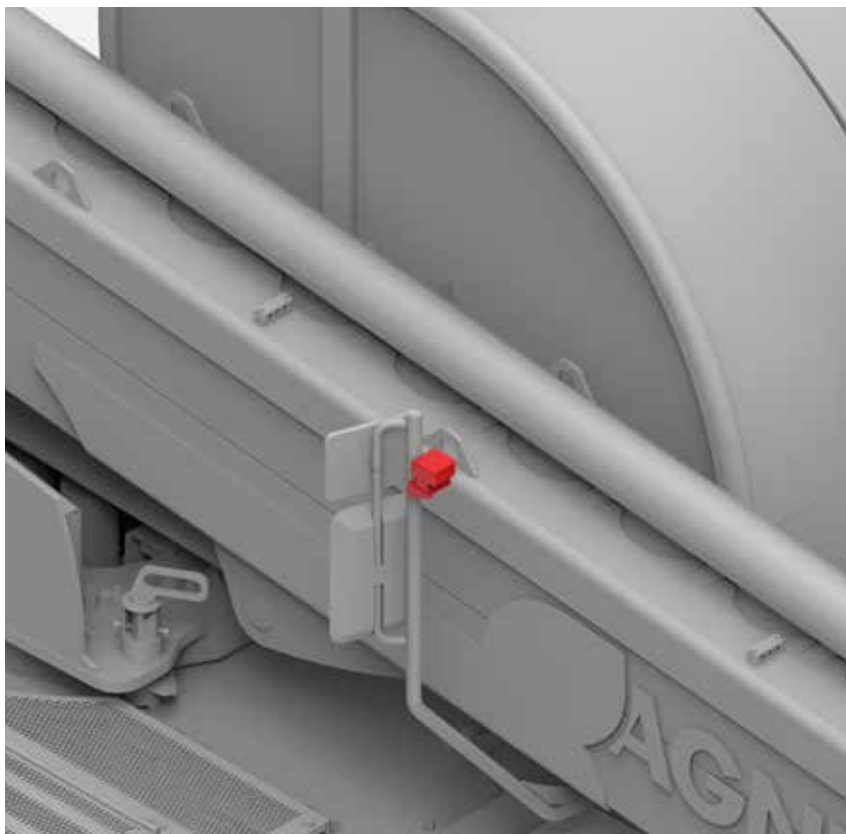
## BOOM SUSPENSION

*OPT-01-001*

Option for users who need to drive the machine over rough terrain while carrying material on forks. It helps improve overall driving comfort by absorbing and significantly reducing vibrations caused by rough and uneven ground, reducing spillages and making for a generally smoother ride.

**Existing kit**  
**RTH - HTH - TH**





## **No.1 CAMERA ON RIGHT HAND SIDE**

---

*OPT-01-004*

Video camera installed on the right hand side of the machine to increase visibility and thereby safety when manoeuvring. Thanks to the monitor in the cab it is possible to check any blind spot. Wireless colour video camera with microphone and audio. Included also in the kit one monitor with support and 2 magnetic antennas 3 d(B).

**Existing kit**  
**RTH - TH**



## **No.1 CAMERA ON THE REAR**

---

*OPT-01-005*

Video camera installed on the rear of the machine to increase visibility and thereby safety when manoeuvring. Thanks to the monitor in the cab it is possible to check any blind spot. Wireless colour video camera with microphone and audio. Included also in the kit one monitor with support and 2 magnetic antennas 3 d(B).

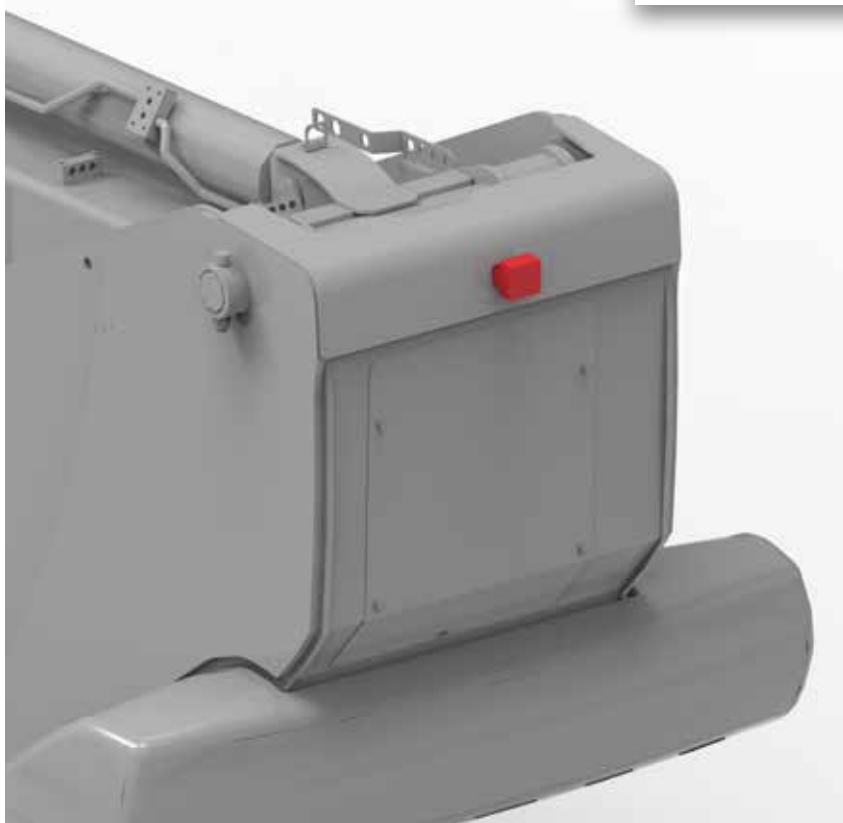
**Existing kit**  
**RTH - HTH - TH**



## No.2 CAMERAS (FRONT + REAR WIRELESS + MONITOR IN THE CAB)

*OPT-01-006*

Option composed of two wireless video cameras installed on the top of the boom and on the rear of the machine to increase visibility and thereby safety when manoeuvring, as the area can be viewed on the monitor in the cab. Wireless colour video camera with microphone and audio. Included also in the kit one monitor with support and 3 magnetic antennas (2 at 3 d(B) and 1 at 5 d(B)).



**Existing kit**  
**RTH - HTH - TH**



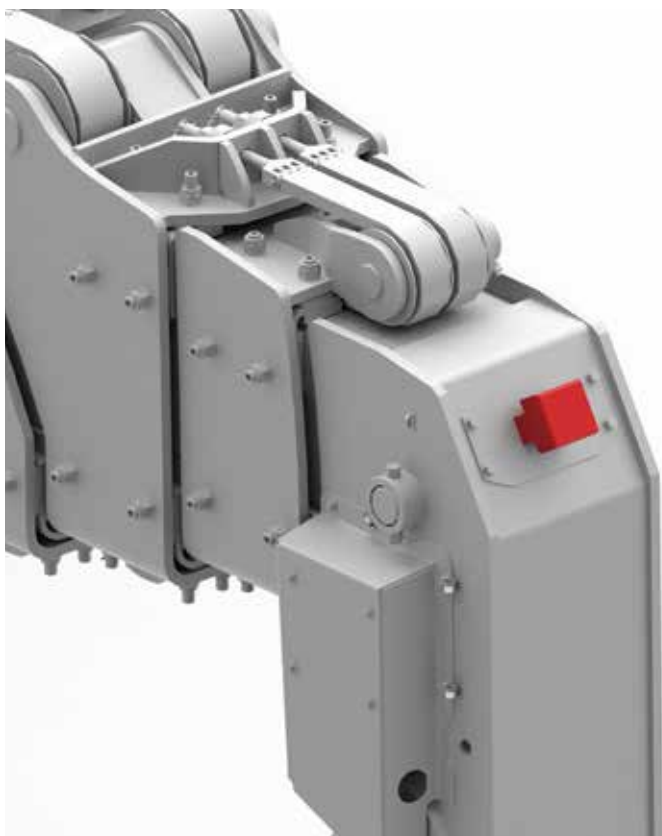
## **No.3 CAMERAS (2 FRONT + 1 REAR WIRELESS + MONITOR IN THE CAB)**

*OPT-01-007*

Option composed of three wireless video cameras, one installed in the top of the boom, one the right hand side and the last one on the rear of the machine to increase visibility and thereby safety when manoeuvring. Thanks to the monitor in the cab it is possible to check any blind spot. Wireless colour video camera with microphone and audio. Included also in the kit one monitor with support and 4 magnetic antennas (2 at 3 d(B) and 2 at 5 d(B)).

**Existing kit**

**RTH - HTH - TH**





## No. 4 CAMERAS 360° VIEW

*OPT-01-008*

This is an intelligent camera monitor system designed to assist low-speed manoeuvring by providing the driver with a complete surround view of the vehicle in real time.

It offers a 360° view technology, thanks to four ultra wide-angle cameras. Each camera covers one full side of the vehicle with a viewing angle of over 180°. Mounted on the top of the boom, on both sides and on the rear of the machine, the calibrated cameras capture the whole surrounding area including the blind spots of the vehicle.

**Existing kit**  
**HTH - TH**



## No. 4 CAMERAS

*OPT-01-018*

Kit composed of n.4 ball cameras with extremely robust case in polycarbonate for hard-to-reach areas outside the vehicle. Alignable on all sides. Camera images are displayed on the touch screen monitor in the cab, dividing the video into four equal sections.

### **Equipment details:**

1/4" CCD - Video format PAL - Viewing angle 150°(D) - 600 TV lines - 0,01 Lux (0 Lux by IR LED on) - Operating temperature range - 30°C ~ 70 °C - Power supply 12 VDC (±10%)  
Connector MiniDIN  
Dimensions 85mm x 78mm x 97mm  
Weight 154g

### **Certificate:**

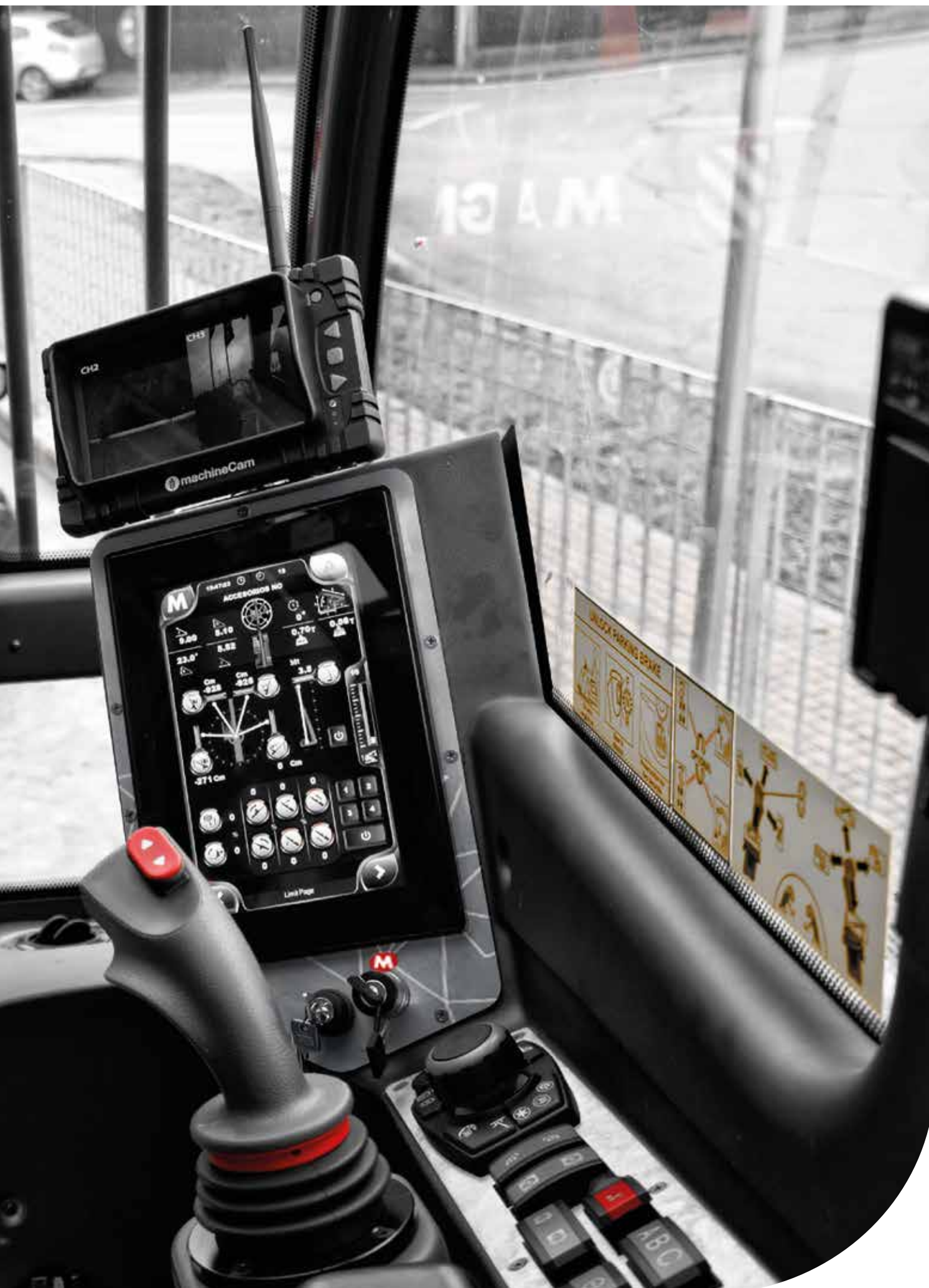
E-mark - IP69K - ECE 118

**Existing kit**  
**RTH**











## AIR SUSPENDED SEAT

*OPT-01-009*

The air suspension seat absorbs the majority of the machine's dynamic oscillations during movement, making driving more comfortable.

**Existing kit**  
**RTH - HTH - TH**



## TILTING SEAT

*OPT-01-010*

Option which allows the seat to recline in order to obtain a perfect view of the load with the boom elevated so that the operator is not required to adopt unergonomic positions while working.

**Existing kit**  
**RTH - HTH - TH**



## SEAT HEADREST

---

OPT-01-011

Option that increases seat comfort to provide the operator with an exceptional driving experience.



**Existing kit**  
**RTH - HTH - TH**



## HEATED SEAT 24V

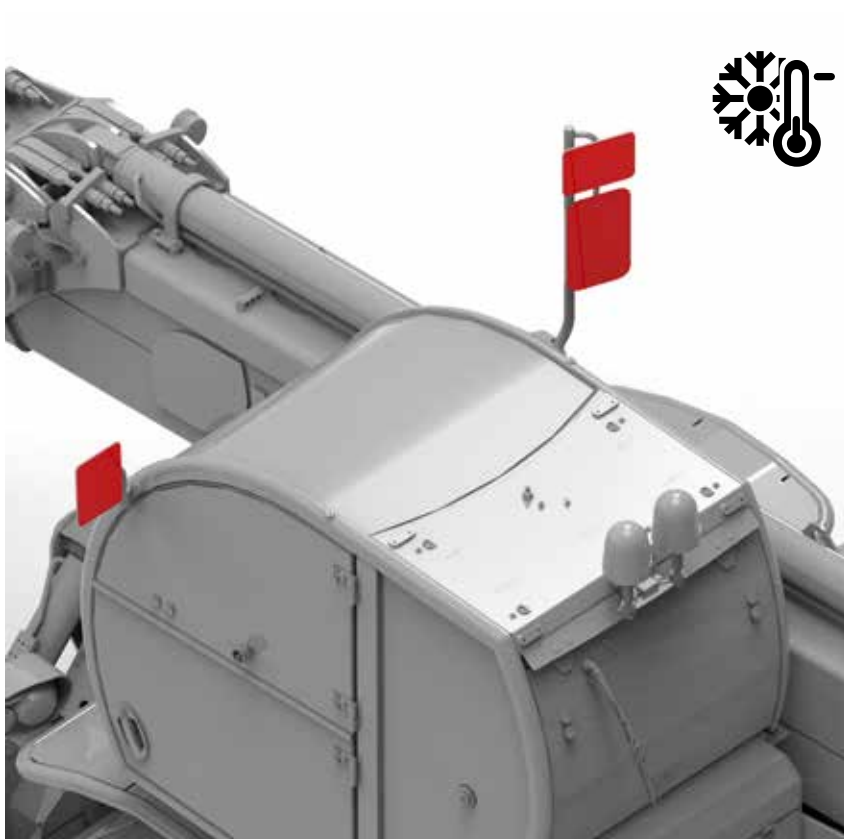
---

OPT-01-012

Option that increases seat comfort and user well-being on cold days. The seat is equipped with a 24V heating system. The heat is gradually reduced automatically, and when the lowest level is reached, the seat heating system is switched off automatically. It is also possible to disable the system manually at any time.



**Existing kit**  
**RTH - HTH - TH**



## HEATED REAR VIEW MIRRORS (ALL) 24V

*OPT-01-013*

Option which ensures full and complete mirror de-icing via a 24V internal heating circuit. Perfect for the most extreme and prolonged cold conditions.

**Existing kit**

**RTH - HTH - TH**



## ROLL-UP SUNBLIND

*OPT-01-014*

Option consisting of roll-up sunblind which protect the cab from UV rays and make the operator's work more comfortable, and above all safer. Manually operated, without guide rods and pull rod stopping with hooks.

**Existing kit**

**RTH - HTH - TH**



## RADIO DAB

---

*OPT-01-015*

The digital radio expands the features of the vehicle radio by incorporating a Digital Receiver which receives DAB and DAB+ terrestrial radio broadcasts. The advantages of digital radio include an enormous range of channels and impressive sound quality. As digital broadcasts are not yet available in all areas, DAB reception will automatically switch between digital and analogue reception depending on the signal strength. Integrated Bluetooth connection.

**Existing kit**

**RTH - HTH - TH**



## AIR SUSPENDED SEAT WITH HEATING 24V

---

*OPT-01-019*

The air suspension seat absorbs the majority of the machine's dynamic oscillations during movement, making driving more comfortable. Option that increases seat comfort and user well-being on cold days. The seat is equipped with a 24V heating system. The heat is gradually reduced automatically, and when the lowest level is reached, the seat heating system is switched off automatically. It is also possible to disable the system manually at any time.

**Existing kit**

**RTH - HTH - TH**





## 12" DISPLAY

*OPT-01-016*

High-resolution XL (12 inch) touchscreen which facilitates use of the driving screens and load charts in the cab.

**Existing kit**

**RTH - HTH - TH**



## AIR CONDITIONING

*OPT-01-017*

The air conditioning option helps to automatically create a climate of constant well-being in the passenger compartment, even in the event of direct sunlight or very high or very low external temperatures. For this purpose the temperature, the intensity of the ventilation and the air distribution are regulated by sensors according to the presettings and continuously adapted to the current conditions. Integrated dehumidification effectively prevents fogging of the crystals.

**Existing kit**

**RTH 4.18  
TH**





		RTH 4.18	RTH 5.18	RTH 5.21	RTH 5.23	RTH 5.25	RTH 6.21	RTH 6.23	RTH 6.25	RTH 6.30
<b>OPT-01-002</b>	Additional heater 24V (Eberspacher)	•	•	•	•	•	•	•	•	•
<b>OPT-01-003</b>	Remote control for additional heater 24V (Eberspacher)	○	•	•	•	•	•	•	•	•
<b>OPT-01-001</b>	Boom suspension	•	•	•	•	•	•	•	•	•
<b>OPT-01-004</b>	No.1 Camera on right hand side	•	•	•	•	•	•	•	•	•
<b>OPT-01-005</b>	No.1 Camera on the rear	•	•	•	•	•	•	•	•	•
<b>OPT-01-006</b>	No.2 Cameras (front + rear wireless + monitor in the cab)	•	•	•	•	•	•	•	•	•
<b>OPT-01-007</b>	No.3 Cameras (2 front + 1 rear wireless + monitor in the cab)	•	•	•	•	•	•	•	•	•
<b>OPT-01-008</b>	No. 4 Cameras 360° view	○	○	○	○	○	○	○	○	○
<b>OPT-01-009</b>	Air suspended seat	•	•	•	•	•	•	•	•	•
<b>OPT-01-010</b>	Tilting seat	•	•	•	•	•	•	•	•	•
<b>OPT-01-011</b>	Seat headrest	•	•	•	•	•	•	•	•	•
<b>OPT-01-012</b>	Heated seat 24V	•	•	•	•	•	•	•	•	•
<b>OPT-01-013</b>	Heated rear view mirrors (all) 24V	•	•	•	•	•	•	•	•	•
<b>OPT-01-014</b>	Roll-up sunblind	•	•	•	•	•	•	•	•	•
<b>OPT-01-015</b>	Radio DAB	•	•	•	•	•	•	•	•	•
<b>OPT-01-016</b>	12" display	•	•	•	•	•	✓	✓	✓	✓
<b>OPT-01-017</b>	Air conditioning for RTH 4.18	•	✓	✓	✓	✓	✓	✓	✓	✓
<b>OPT-01-018</b>	No.4 cameras	•	•	•	•	•	•	•	•	•
<b>OPT-01-019</b>	Air suspended seat with heating 24V	•	•	•	•	•	•	•	•	•



## CARE & COMFORT

[illegible]

● = Existing kit

**O = Kit to create**

✓ = On board







---

## PERFORMANCE & WORKING EXPERIENCE

Everything revolves around excellent performances that make using a **Magni** a unique experience. An experience where the operator is the center, who will be able to do his best during working hours.

# 02





work time	Nominal flow	Maximum operating pressure	Capacity	Height	Parameters of motor
1-99min	2-5ml/min	35MPa	4L	428mm	24VDC 30W
			8L	523mm	
			10L	596mm	
			15L	716mm	
			20L	848mm	

## AUTOMATIC GREASING SYSTEM

OPT-02-018

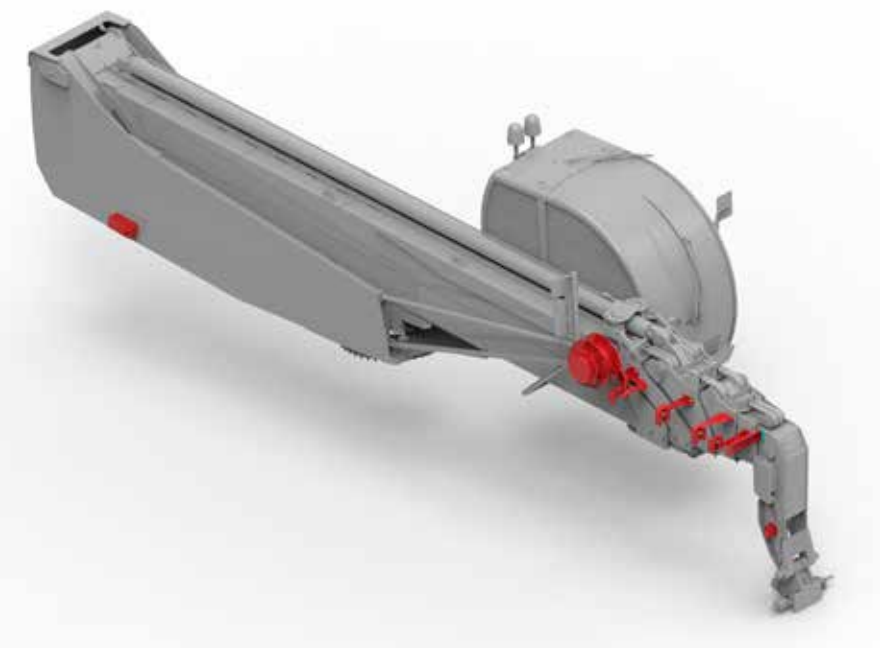
Timed automatic lubrication system which greases the machine's swivel pins to streamline scheduled maintenance and extend working hours. This kit is composed by: high-pressure lubrication pump, distributor and monitor. In the system, the ECU LCD-based monitor controls the high-pressure grease pump, which operates cyclically. During operation, the reducer motor drives the eccentric wheel to reciprocate the plunger pair for grease pumping. After the pressurized grease enters into the supply line, the grease is supplied to lube points via the distributor metering chamber.

Existing kit  
**TH**

## 110/220 V PLUG AT BOOM HEAD

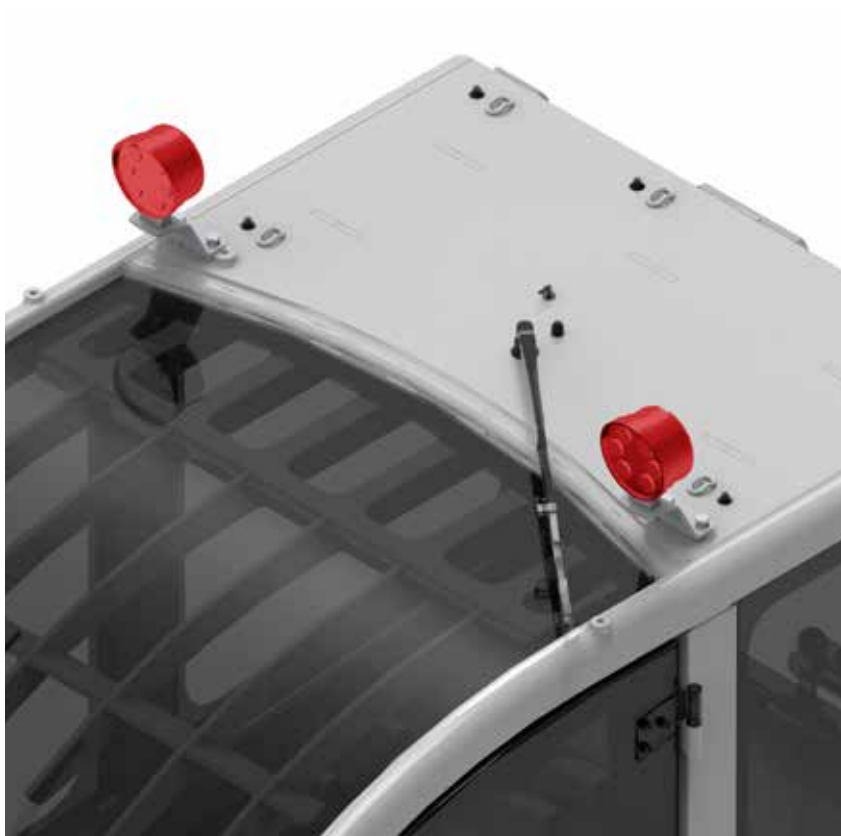
OPT-02-002

Extension cable provision for connection of 110/220 V components on the end of the boom.



Existing kit  
**RTH - HTH - TH**





## LED LIGHTS ON TOP OF THE CAB FRONT

*OPT-02-003*

Option composed of two led work lights installed on the upper front-end of the machine which increase the light coverage and output to allow work in dark or poorly lit areas. The operator must always ensure that manoeuvres are performed in a safe environment even though they have more light available.

**Existing kit**

**RTH - HTH - TH**



## LED LIGHTS ON TOP OF THE CAB REAR

*OPT-02-004*

Option composed of two led work lights installed on the upper rear-end of the machine which increase the light coverage to allow work in dark or poorly lit areas. The operator must always ensure that manoeuvres are performed in a safe environment even though they have more light available.

**Existing kit**

**RTH - HTH - TH**

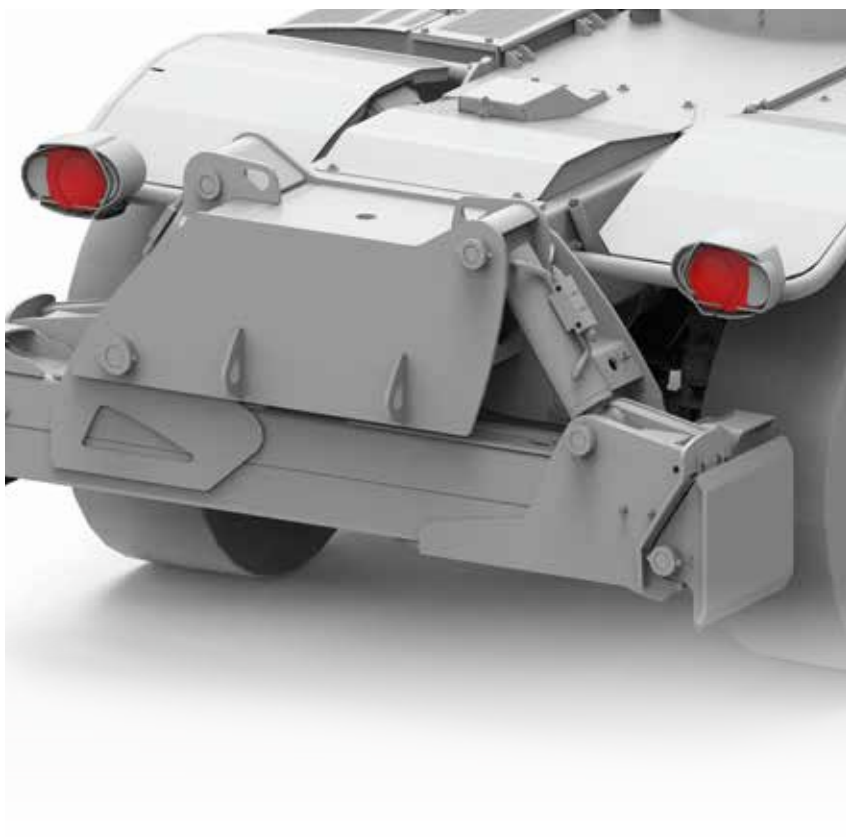


## LED LIGHTS ON THE BOTTOM OF THE CAB FRONT

*OPT-02-005*

Option composed of two led work lights installed on the lower front-end of the machine which increase the light coverage to allow work in dark or poorly lit areas. The operator must always ensure that manoeuvres are performed in a safe environment even though they have more light available.

**Existing kit**  
**RTH - HTH - TH**

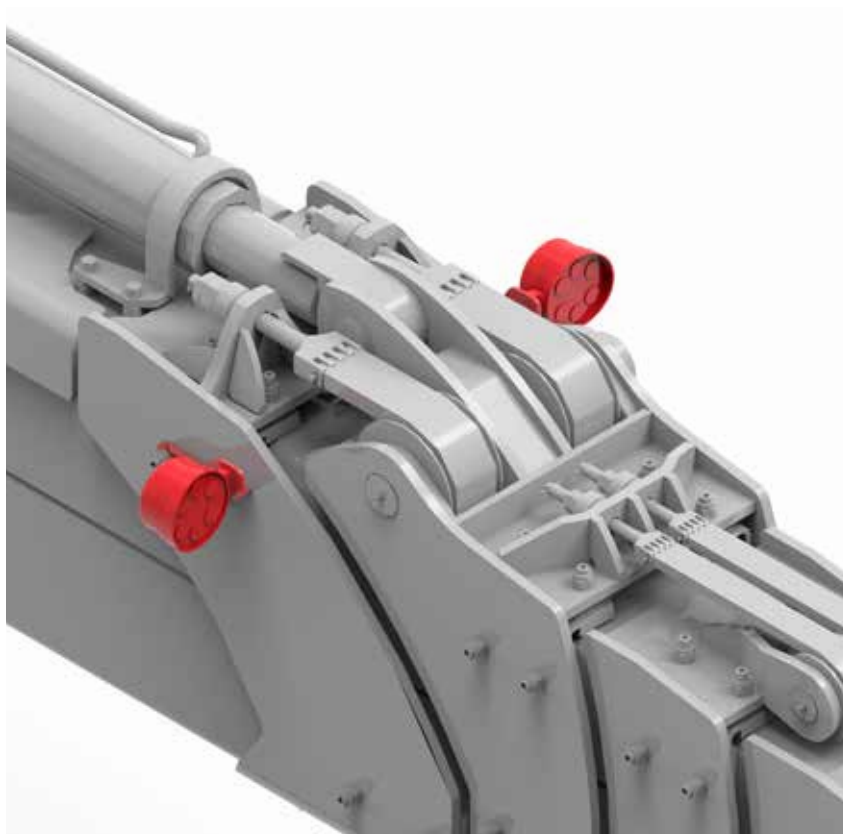


## FRONT - REAR LED HEADLAMPS

*OPT-02-006*

Option composed of four led headlights which increase the light output by 20% both for road use and site operation.

**Existing kit**  
**RTH - HTH - TH**



## LED LIGHTS ON THE BOOM

*OPT-02-007*

Option composed of two led work lights installed on the end boom head which increase the light coverage and output to allow work in dark or poorly lit areas. The operator must always ensure that manoeuvres are performed in a safe environment even though they have more light available.

**Existing kit**  
**RTH - HTH - TH**

## STANDARD REMOTE CONTROL

*OPT-02-008*



Remote control allowing use of all boom functions from the ground, thus increasing the safety of the operators. The remote control uses the Bluetooth system and can be used all over the world without particular restrictions. For Australia, Japan and Korea the remote control is equipped with a consent button on the joystick.

**Existing kit**  
**RTH - HTH - TH**



## REMOTE CONTROL FOR DRIVING OPERATIONS FROM BASKET WITH DISPLAY

### OPT-02-009

Radio control equipped with a color display which, in addition to the control of the boom, allows the machine to be driven remotely and the stabilisation phases managed directly from the basket.

This function can be disabled for those who do not need to use it.

The remote control uses the Bluetooth system and can be used all over the world without particular limitations. For Australia, Japan and Korea the remote control is equipped with a consent button on the joystick.

### Existing kit

## RTH - HTH - TH

### Operations with the remote:

- machine start/stop
- turret rotation
- boom out/in
- boom up/down
- hare/turtle mode
- emergency pump
- increase/decrease RPM
- emergency stop
- control for valves at boom head
- boom out mode M1 and M2 (only RHT6.46)
- remote drive
- Stabilizers up/down (automatic stabilizing and levelling)
- machine movement forward/backward
- machine movement left/right
- 6 programmable keys for additional functions

### Information available on the remote:

- remote control battery level
- indicator for machine pairing
- Indicator for % of anti tilting system
- indicator of activation of the valve at the boom's head
- attachment confirmation from remote
- machine status (alarms/engine etc. same as page 1 on display)
- info on load status (boom position, angle, maximum load, actual load)





## REMOTE CONTROL FOR TREE CUTTING WITH DISPLAY

OPT-02-011



Remote control equipped with a practical color display which shows all boom geometric data to the user on the ground, increasing safety on the operator side. Possibility to operate the tree cutting attachment directly with a button positioned on the remote control. The remote control uses the Bluetooth system and can be used all over the world without particular restrictions. For Australia, Japan and Korea the remote control is equipped with a consent button on the joystick.

### Existing kit RTH - HTH - TH

#### Operations with the remote:

- machine start/stop
- turret rotation
- boom out/in
- boom up/down
- hare/turtle mode
- emergency pump
- increase/decrease RPM
- emergency stop
- control for valves at boom head
- boom out mode M1 and M2 (only RHT6.46)
- remote drive
- Stabilizers up/down (automatic stabilizing and levelling)
- machine movement forward/backward
- machine movement left/right
- 6 programmable keys for additional functions
- dedicated joystick for tree cutting
- grab rotation (vertical axis)
- close/open grab
- saw on/off operation

#### Information available on the remote:

- remote control battery level
- indicator for machine pairing
- Indicator for % of anti tilting system
- indicator of activation of the valve at the boom's head
- attachment confirmation from remote
- machine status (alarms/engine etc. same as page 1 on display)
- info on load status (boom position, angle, maximum load, actual load)













## DRIVE FROM THE BASKET

*OPT-02-012*

Optional which, alongside the normal radio functions, allows the machine to be driven and the stabilisers operated directly from the basket control console. Perfect for increasing work productivity and efficiency. Remote control included in the code.

**Existing kit**  
**RTH - TH**

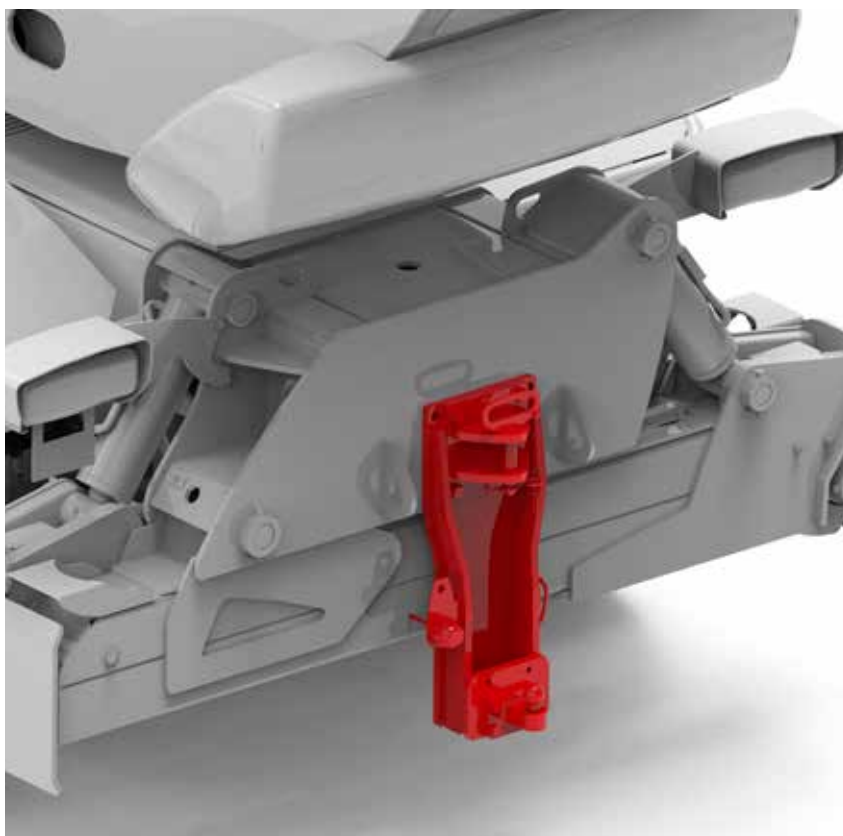


## QUICK BOOM IN/OUT

*OPT-02-024*

Optional which increases boom extension and retraction speed when unladen.

**Existing kit**  
**HTH - TH**

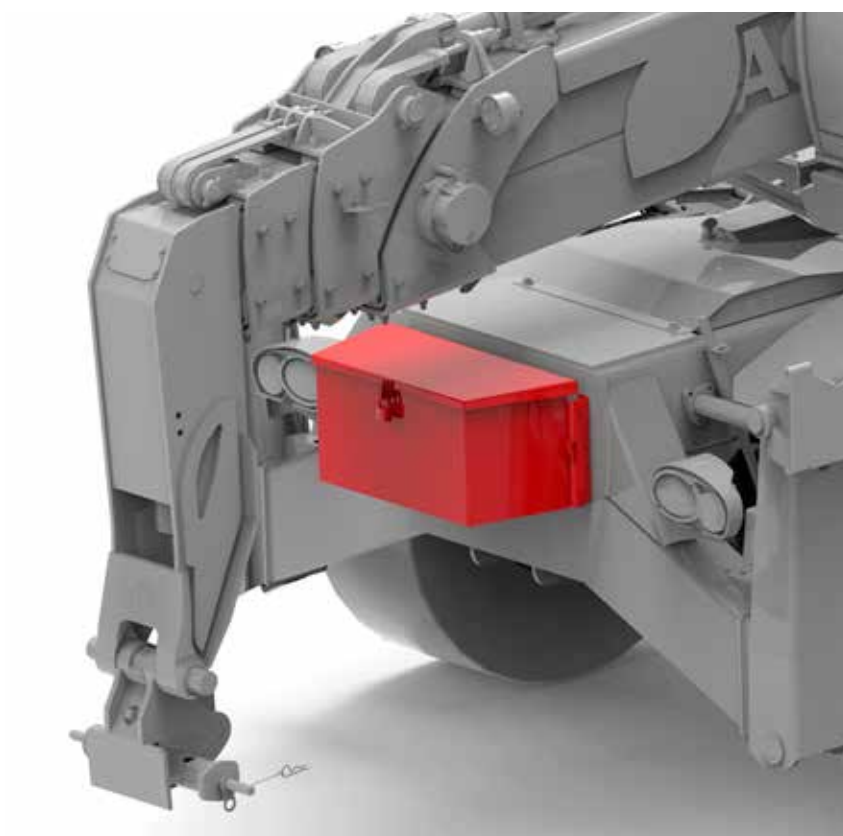


## COMPLETE TOWING HOOK

*OPT-02-015*

Complete tow hook which allows coupling of trailers via ball hitch.

**Existing kit**  
**RTH**

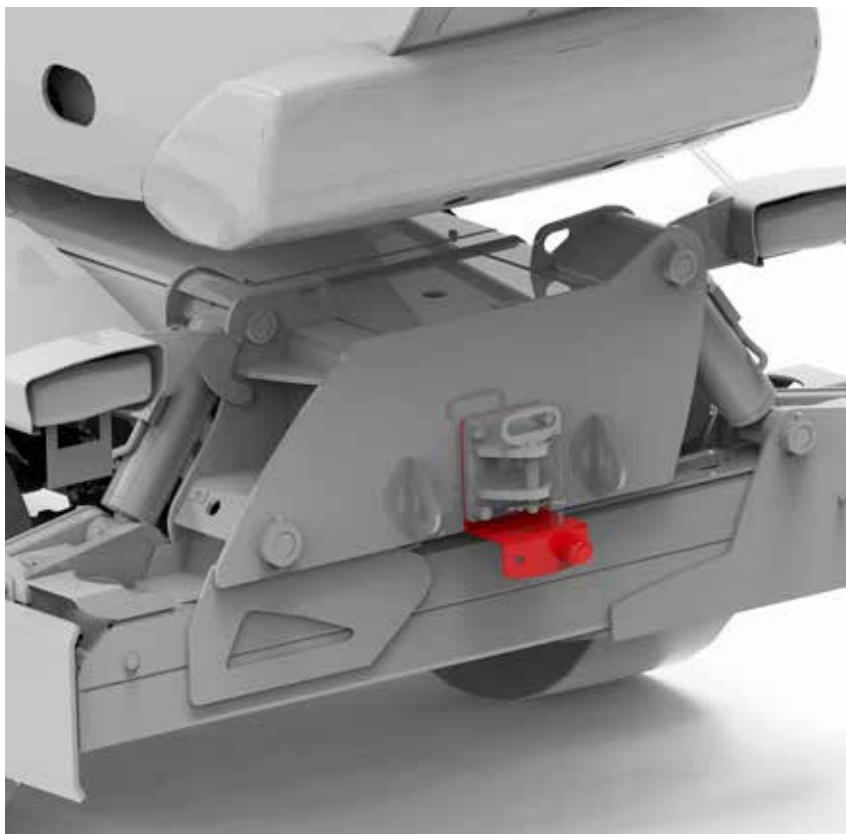


## COMPLETE TOOL BOX

*OPT-02-013*

Practical tool compartment specifically for storing tools.

**Existing kit**  
**RTH - TH**

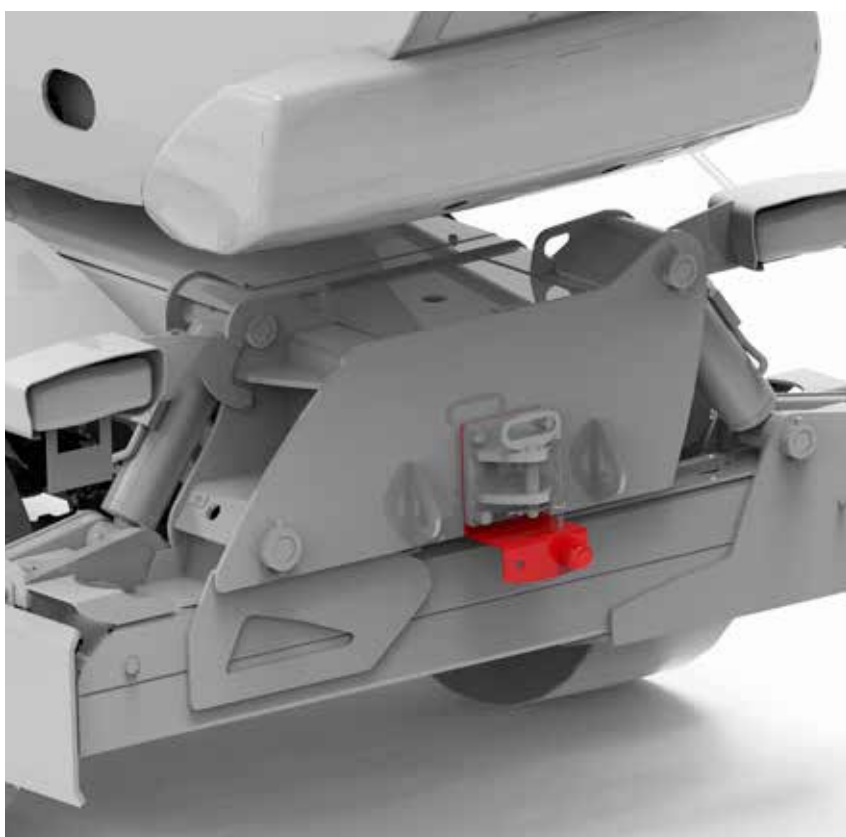


## REAR ELECTRIC PLUG 24V FOR TRAILER [7 PINS]

*OPT-02-016*

Trailer electrical socket 24V - 7-pins  
socket to duplicate rear lights.

**Existing kit**  
**RTH - TH**



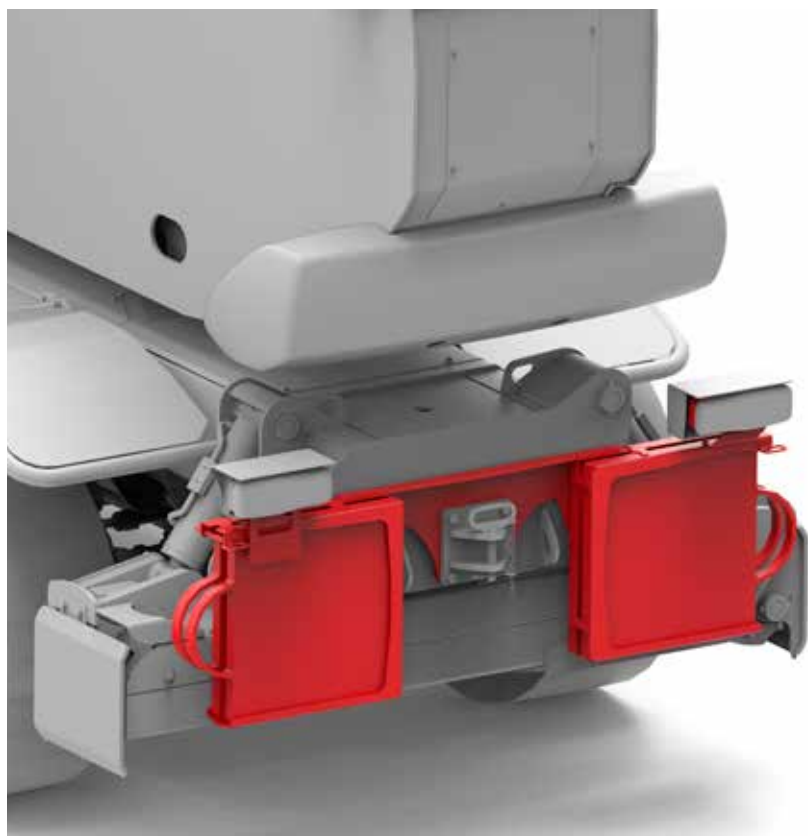
## REAR ELECTRIC PLUG 24V FOR TRAILER [13 PINS]

*OPT-02-017*

Trailer electrical socket 24V - 13-pins  
socket to duplicate rear lights.

**Existing kit**  
**RTH - TH**





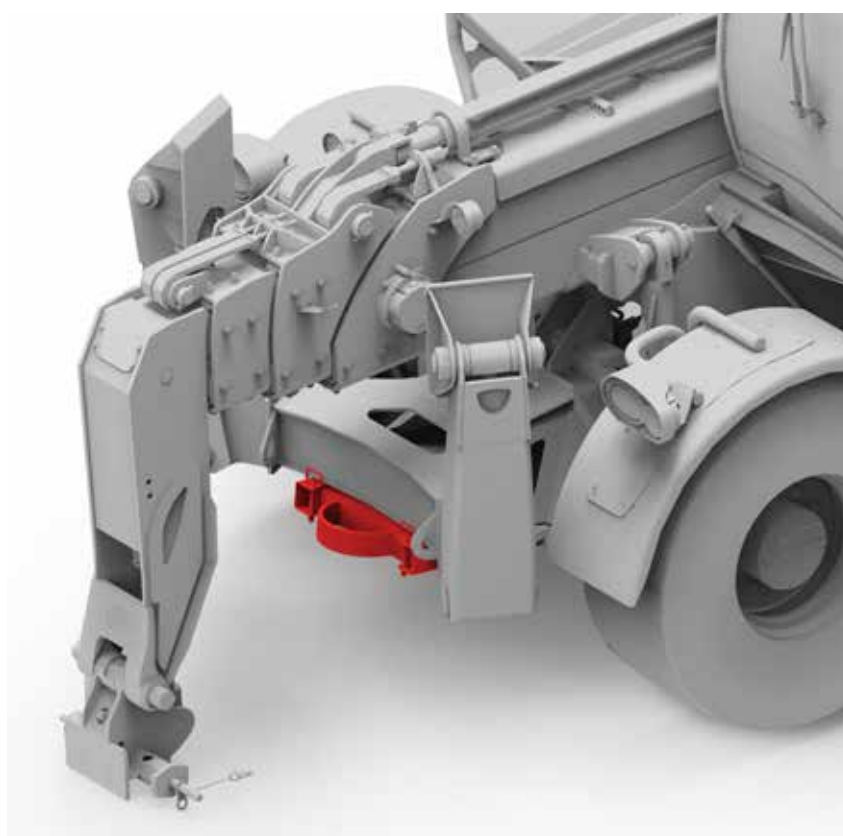
## **HOLDERS FOR STABILISERS PLASTIC PADS (INCLUDING THE PADS) RTH**

---

*OPT-02-019*

Practical metallic support for the stabiliser support bases to rest on pads included.

**Existing kit**  
**RTH**



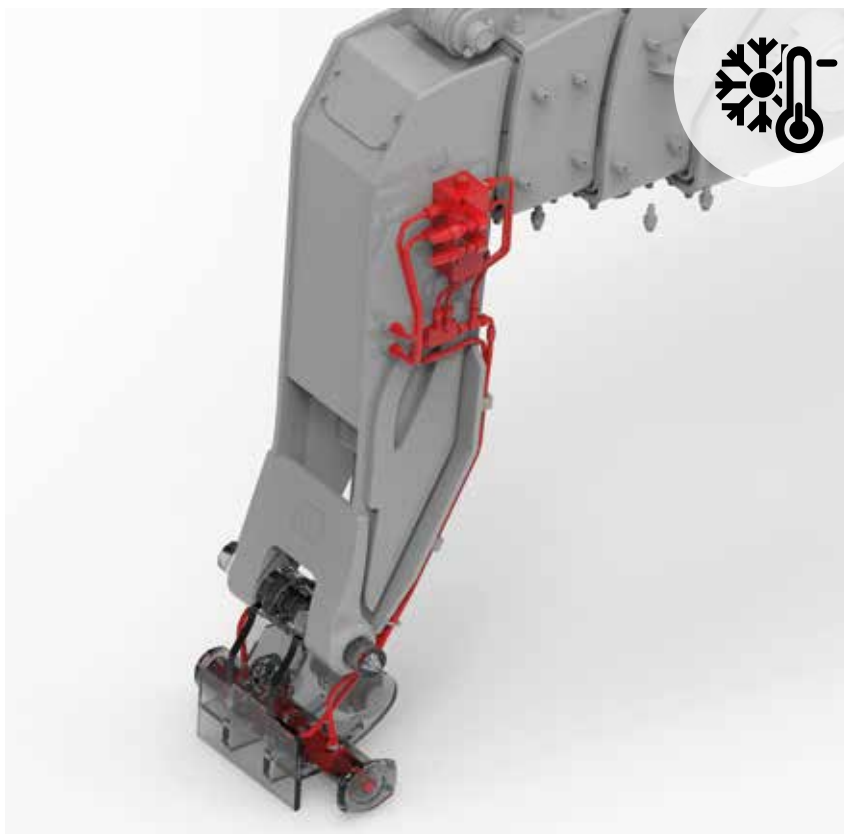
## **HOLDERS FOR STABILISERS PLASTIC PADS (INCLUDING THE PADS) TH**

---

*OPT-02-032*

Practical metallic support for the stabiliser support bases to rest on pads included.

**Existing kit**  
**TH**



## HYDRAULIC LOCK FOR ATTACHMENTS

---

*OPT-02-020*

Option for quick coupling and release of the various attachments via a hydraulic ram while sitting in the cab. Perfect for countries with very cold climates.

**Existing kit**  
**RTH - HTH - TH**



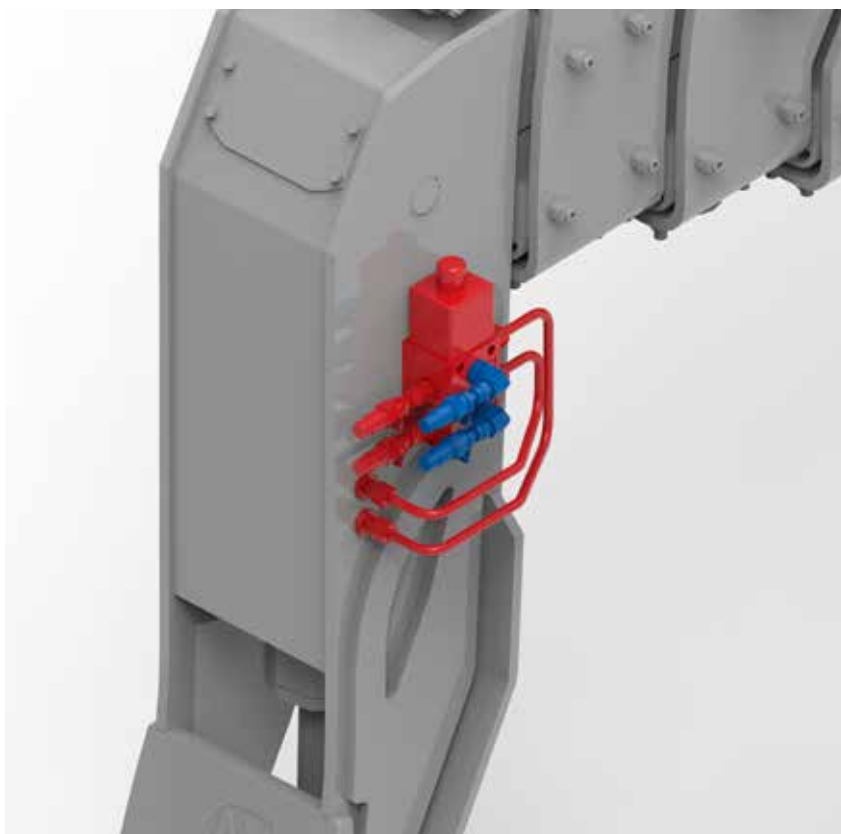
## HYDRAULIC BLOCK FOR TURRET ROTATION

---

*OPT-02-021*

Practical option for locking/releasing the turret via a hydraulic ram while sitting in the cab. Perfect for countries with very cold climates.

**Existing kit**  
**RTH**

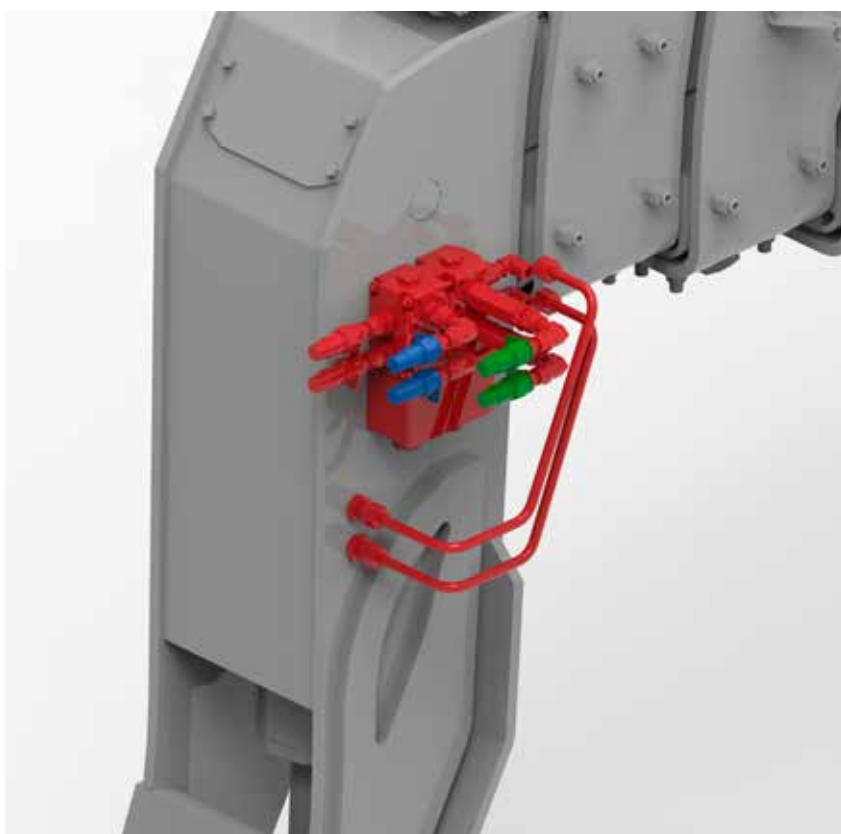


## DOUBLE HYDRAULIC OUTPUT AT THE BOOM HEAD

*OPT-02-022*

Option which provides a second auxiliary hydraulic function on the head of the boom. Management is performed by a diverter on the boom head which can be activated electrically by the operator.

**Existing kit**  
**RTH - HTH - TH**

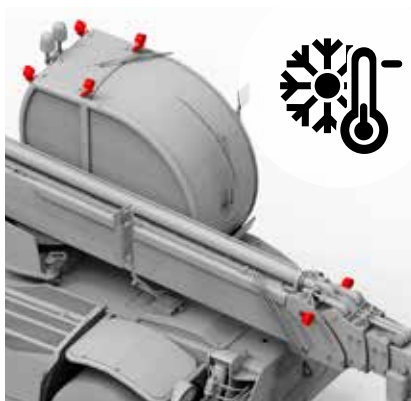


## TRIPLE HYDRAULIC OUTPUT AT THE BOOM HEAD

*OPT-02-023*

Option which provides a third auxiliary hydraulic function on the head of the boom. Management is performed by a diverter on the boom head which can be activated electrically by the operator.

**Existing kit**  
**RTH - HTH - TH**



## NORDIC PACKAGE

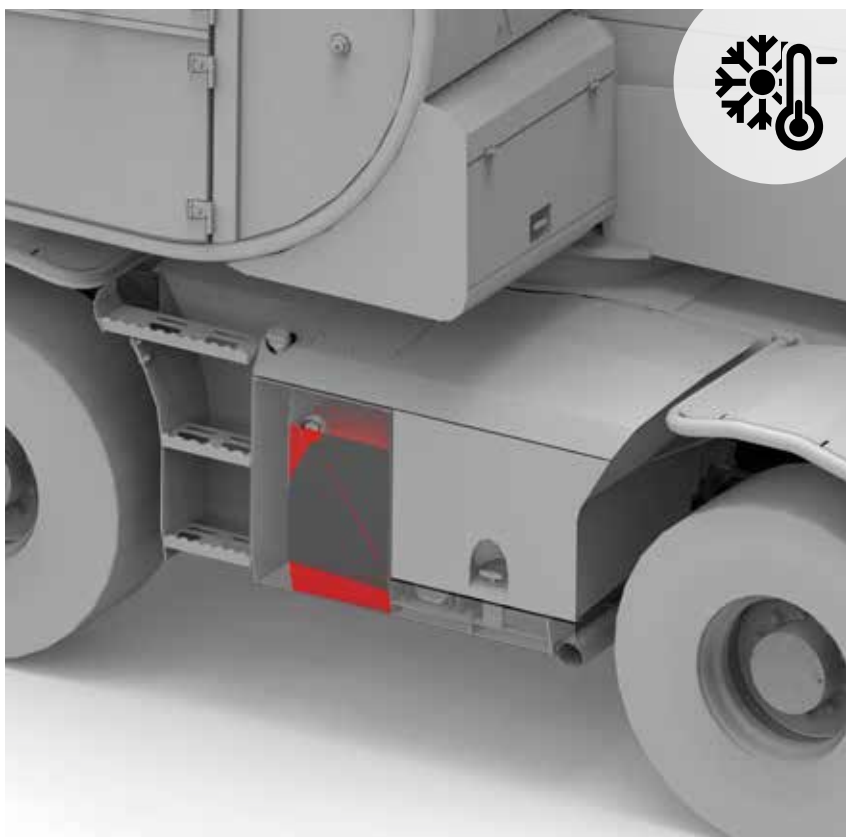
*OPT-02-014*

Option consisting of:

- heater for engine coolant 230V  
OPT-02-027
- hydraulic oil for cold climate  
OPT-02-025
- led lights on top of the cab front  
OPT-02-003
- led lights on top of the cab rear  
OPT-02-004
- led lights on the boom  
OPT-02-007
- external battery cut-off  
OPT-03-003
- 110/220 V plug in the cabin

**Existing kit**

**RTH - HTH - TH**



## HYDRAULIC OIL FOR COLD CLIMATE

*OPT-02-025*

Tellus Shell ISO 32 hydraulic oil which provides full performance in very cold climates down to -32°.

**Existing kit**

**RTH - HTH - TH**





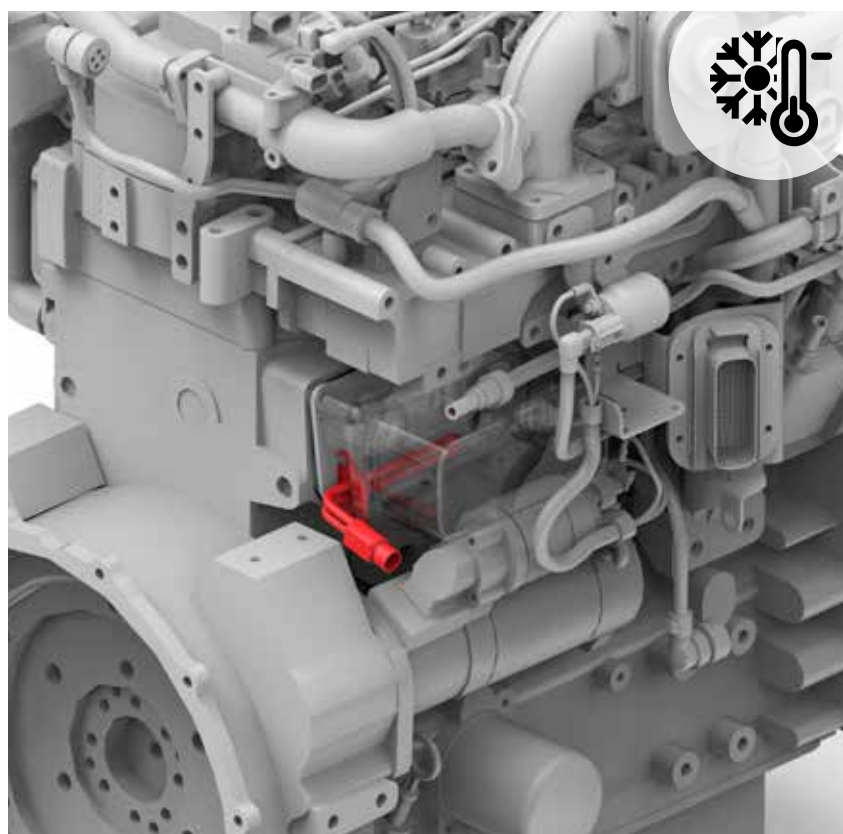
## BIO HYDRAULIC OIL

*OPT-02-026*

High-performance EAL, completely synthetic and zinc free for hydraulic systems. Saturated synthetic ester base. Allows for «lifetime filling» extended oil change intervals, without deposits.

**Existing kit**

**RTH - HTH - TH**



## HEATER FOR ENGINE COOLANT

*OPT-02-027 (230V)*

*OPT-02-033 (110V)*

Option consisting of an electric engine coolant pre-heating element, perfect for countries with cold climates.

**Existing kit**

**RTH - HTH - TH**



## HYDRAULIC OIL HEATER (230V)

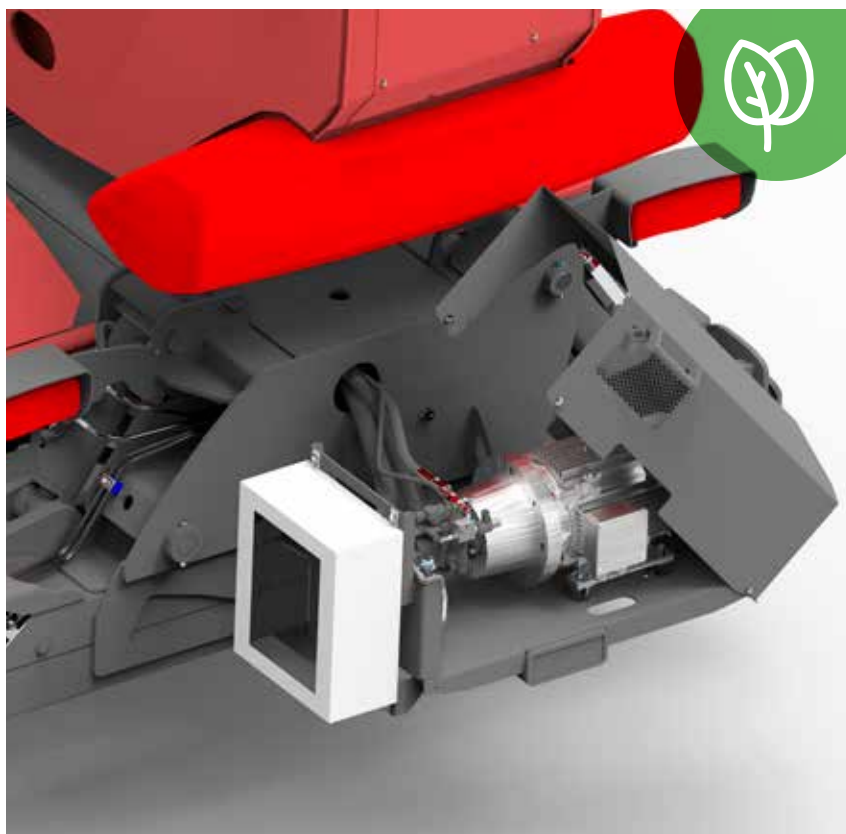
*OPT-02-029*

Option consisting of a 230V plate heating element positioned on the hydraulic oil tank in order to maintain oil viscosity in very cold climates.

**Existing kit**

**RTH - HTH - TH**



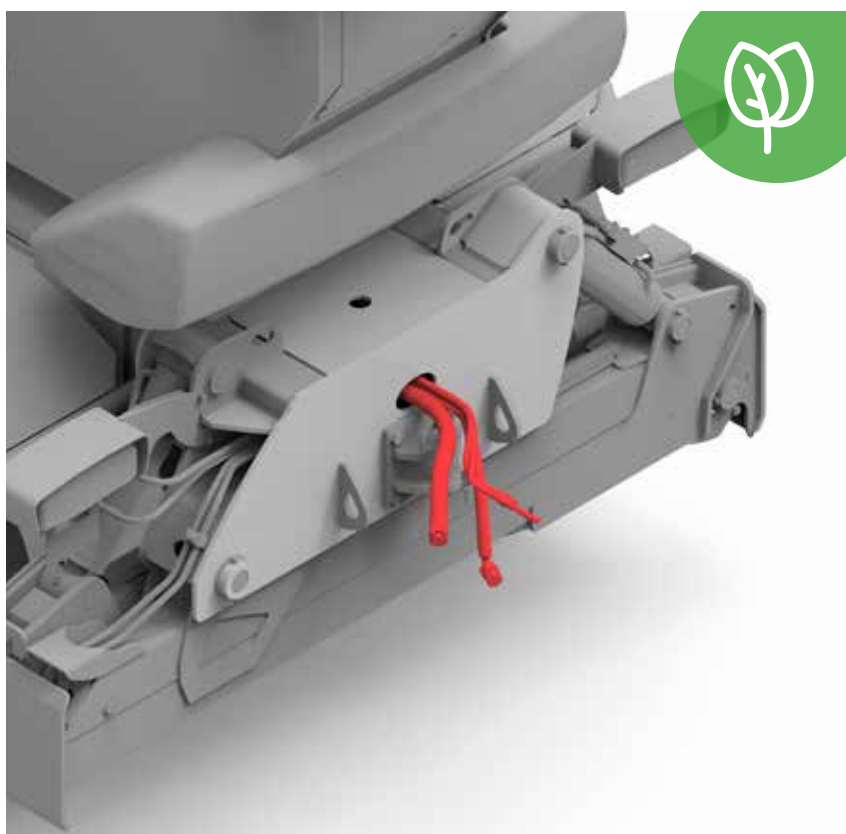


## TWIN POWER 400V

*OPT-02-030*

This option allows the machine to be used without starting the diesel engine. By connecting to an external electricity supply (380 V), it is possible to power the machine and perform all normal lifting and load positioning operations. A 15 kW electric motor and a 90 litre piston pump guarantee performance and precision for each and every movement. Pre-arrangement OPT-02-031 included in this option.

**Existing kit**  
**RTH**



## PRE ARRANGEMENT FOR TWIN POWER 400 V

*OPT-02-031*

Option required for Twin power installation.

**Existing kit**  
**RTH**

		RTH 4.18	RTH 5.18	RTH 5.21	RTH 5.23	RTH 5.25	RTH 6.21	RTH 6.23	RTH 6.25	RTH 6.30
OPT-02-018	Automatic greasing system	O	O	O	O	O	O	O	O	O
OPT-02-002	110/220V plug at boom head	●	●	●	●	●	●	●	●	●
OPT-02-003	Led lights on top of the cab front	●	●	●	●	●	●	●	●	●
OPT-02-004	Led lights on top of the cab rear	●	●	●	●	●	●	●	●	●
OPT-02-005	Led lights on the bottom of the cab front	●	●	●	●	●	●	●	●	●
OPT-02-006	Front - rear led headlamps	●	●	●	●	●	●	●	●	●
OPT-02-007	led lights on the boom	●	●	●	●	●	●	●	●	●
OPT-02-034	Remote control with dead man switch on joystick	●	●	●	●	●	●	●	●	●
OPT-02-008	Standard remote control	●	●	●	●	●	●	●	●	●
OPT-02-009	Remote control for driving operations from basket with display	●	●	●	●	●	●	●	●	●
OPT-02-011	Remote control for tree cutting with display	●	●	●	●	●	●	●	●	●
OPT-02-012	Drive from the basket	O	●	●	●	●	●	●	●	●
OPT-02-024	Quick boom in/out	-	-	-	-	-	-	-	-	-
OPT-02-015	Complete towing hook	●	●	●	●	●	●	●	●	●
OPT-02-013	Complete tool box	●	●	●	●	●	●	●	●	●
OPT-02-016	Rear electric plug 24V for trailer (7 pins)	●	●	●	●	●	●	●	●	●
OPT-02-017	Rear electric plug 24V for trailer (13 pins)	●	●	●	●	●	●	●	●	●
OPT-02-019	Holders for stabiliser' plastic pads (including the pads) RTH	●	●	●	●	●	●	●	●	●
OPT-02-032	Holders for stabiliser' plastic pads (including the pads) TH	-	-	-	-	-	-	-	-	-
OPT-02-020	Hydraulic lock for attachments	●	●	●	●	●	●	●	●	●
OPT-02-021	Hydraulic block for turret rotation	●	●	●	●	●	●	●	●	●
OPT-02-022	Double hydraulic output at the boom head	●	●	●	●	●	●	●	●	●
OPT-02-023	Triple hydraulic output at the boom head	●	●	●	●	●	●	●	●	●
OPT-02-014	Nordic package	●	●	●	●	●	●	●	●	●
OPT-02-025	Hydraulic oil for cold climate	●	●	●	●	●	●	●	●	●
OPT-02-026	Bio hydraulic oil	●	●	●	●	●	●	●	●	●
OPT-02-027	Heater for engine coolant (230V)	●	●	●	●	●	●	●	●	●
OPT-02-033	Heater for engine coolant (110V)	●	●	●	●	●	●	●	●	●
OPT-02-029	Hydraulic oil heater (230V)	O	●	●	●	●	●	●	●	●
OPT-02-030	TWIN POWER 400V	●	●	●	●	●	●	●	●	●
OPT-02-031	Pre arrangement for twin power 400V	●	●	●	●	●	●	●	●	●



[illegible]

● = Existing kit

**○ = Kit to create**

✓ = On board



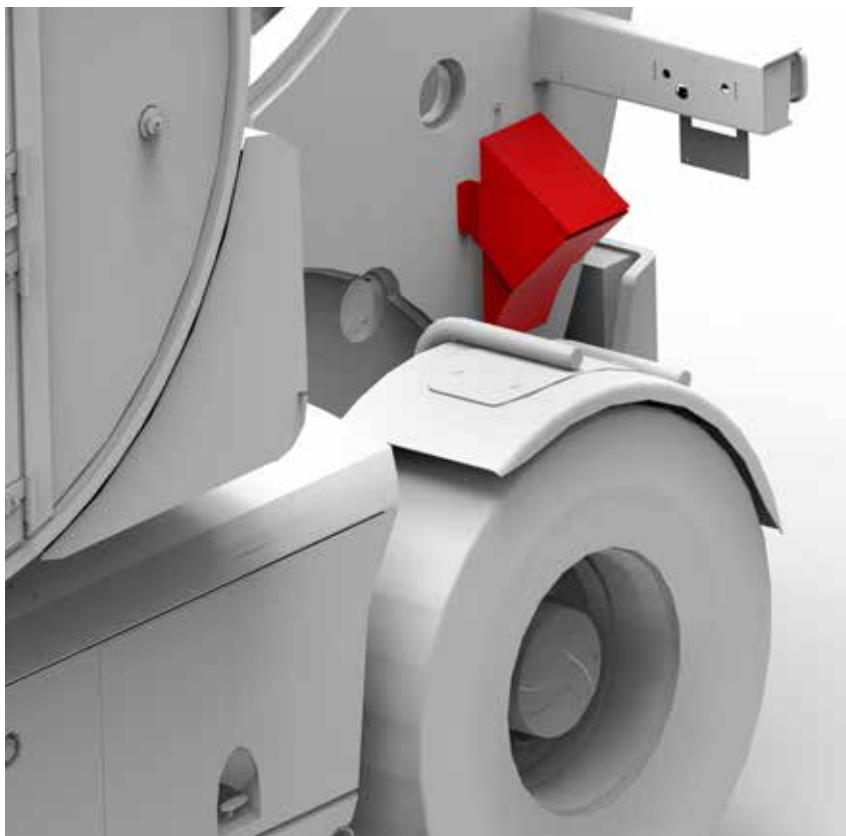


---

## SAFE & SECURE

Safety at **Magni** means products that comply with the latest regulations on health and full safety in any working place and building site.

# 03



## **WHEEL CHOCKS (2) HTH**

*OPT-03-001*

Metal chocks used when parking the machine on slopes to ensure stable positioning.

**Existing kit**  
**HTH**



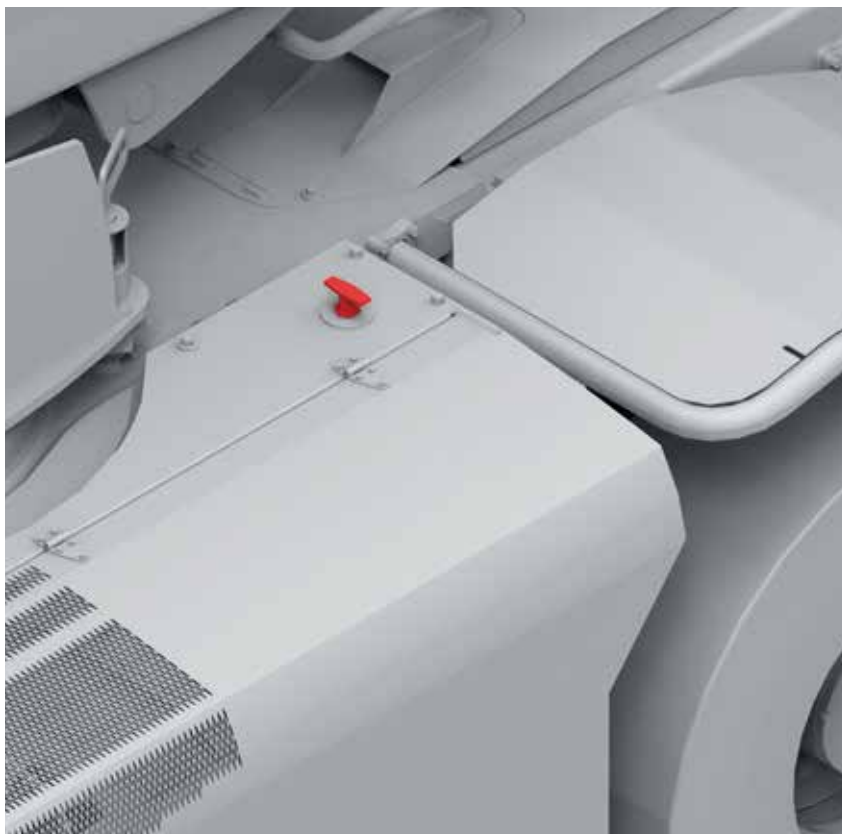
## **WHEEL CHOCKS (2) RTH-TH**

*OPT-03-014*

Metal chocks used when parking the machine on slopes to ensure stable positioning.

**Existing kit**  
**RTH - TH**



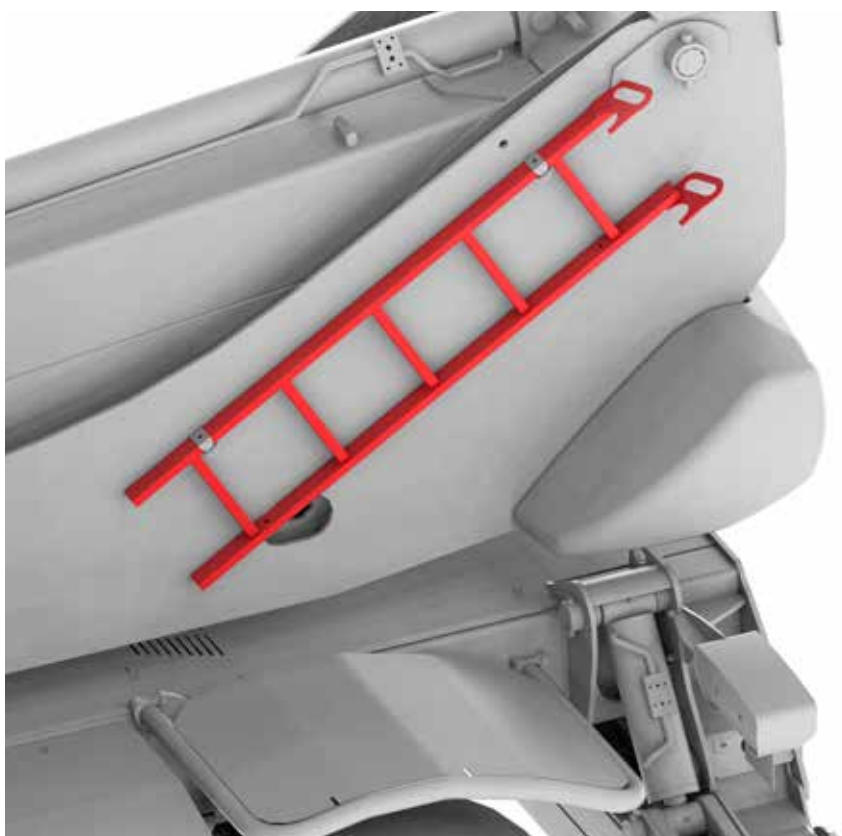


## EXTERNAL BATTERY CUT-OFF

*OPT-03-003*

Option consisting of an electrical disconnect lever installed outside the engine compartment.

**Existing kit**  
**RTH - HTH - TH**

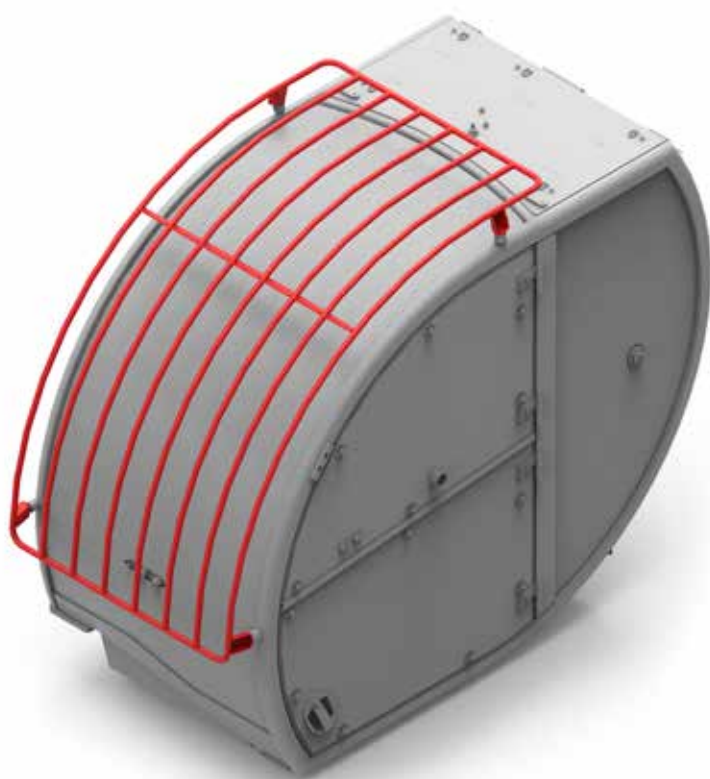


## LADDER + SUPPORTS

*OPT-03-004*

Practical fixed metal ladder to reach the cab and any other part of the machine in complete safety.

**Existing kit**  
**RTH**



## PROTECTION GRID FOR WINDSHIELD

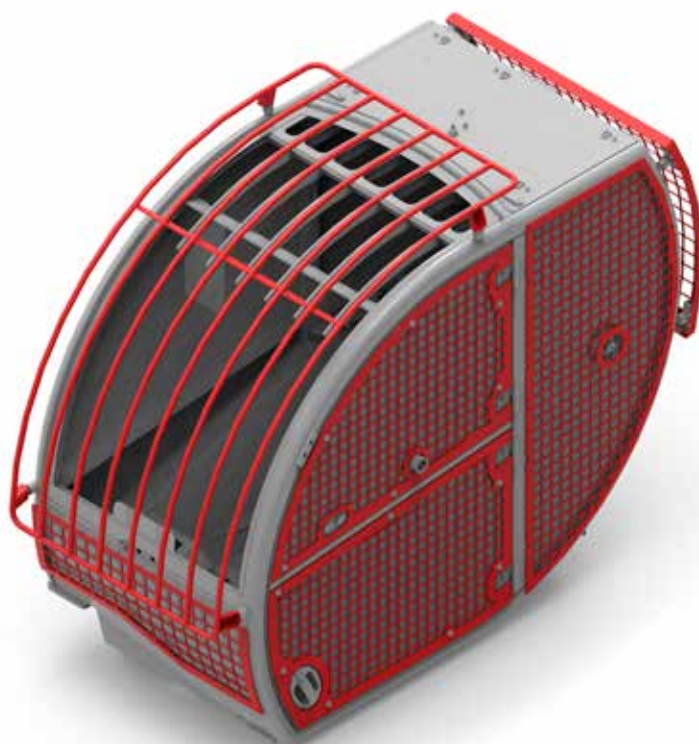
---

*OPT-03-005*

Protective metal grid installed on the outside of the windscreen to guarantee maximum safety in environments with a high risk of objects falling from height.

**Existing kit**

**RTH - HTH - TH**



## COMPLETE CAB'S GLASS PROTECTION

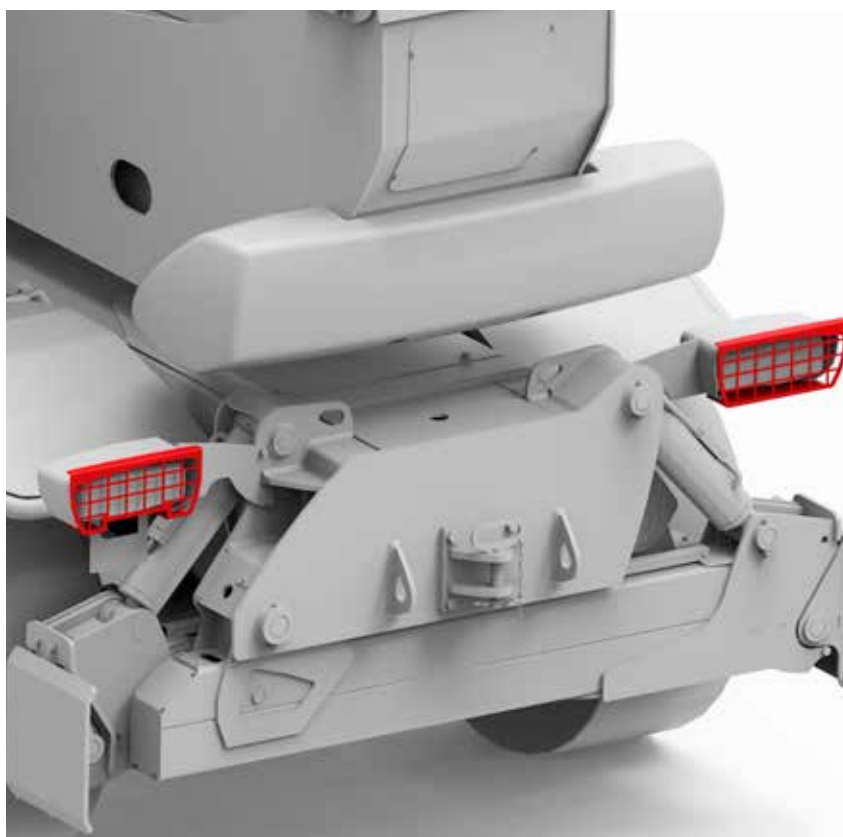
---

*OPT-03-006*

Complete metal protection grid for all the glasses in the cab. Specific for tunnelling or mining where the risk of fall of heavy objects is very high.

**Existing kit**

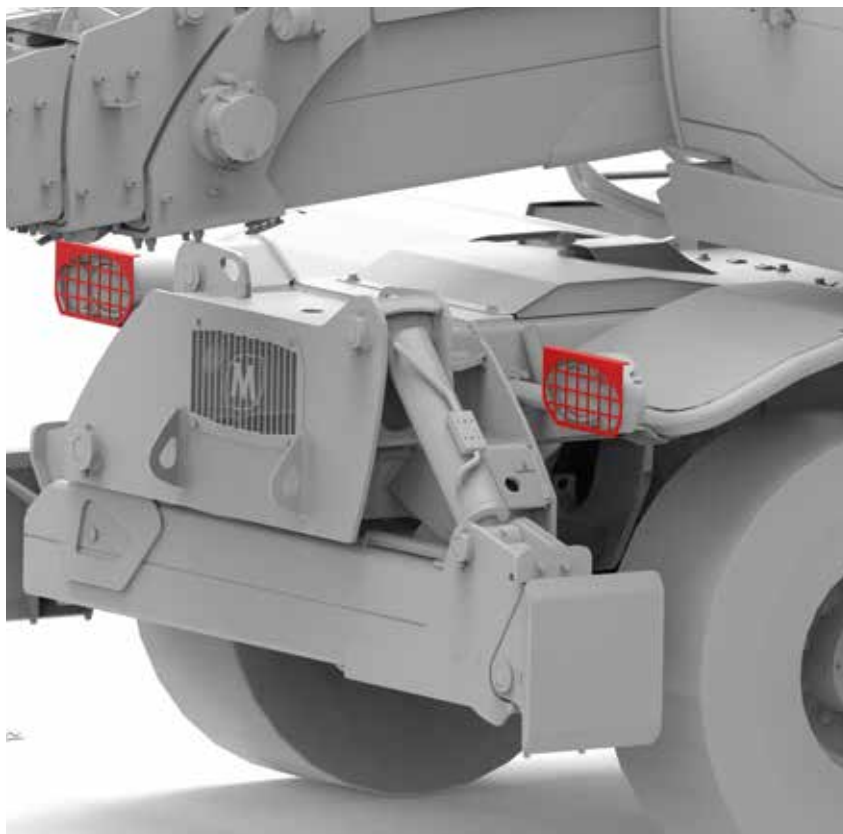
**RTH - HTH - TH**



## HEADLAMP PROTECTION (RTH + TH)

*OPT-03-009*

Front and rear light protection option, often used with full cab protection. An optional ideal when using the machine in areas where there is risk of fall of objects from height.



**Existing kit**  
**RTH - HTH - TH**











## ANGLE SENSOR FOR Q- FIT

*OPT-03-007*

Quick coupling inclination sensor.

**Existing kit**  
**HTH - TH**



## WIRELESS ANEMOMETER

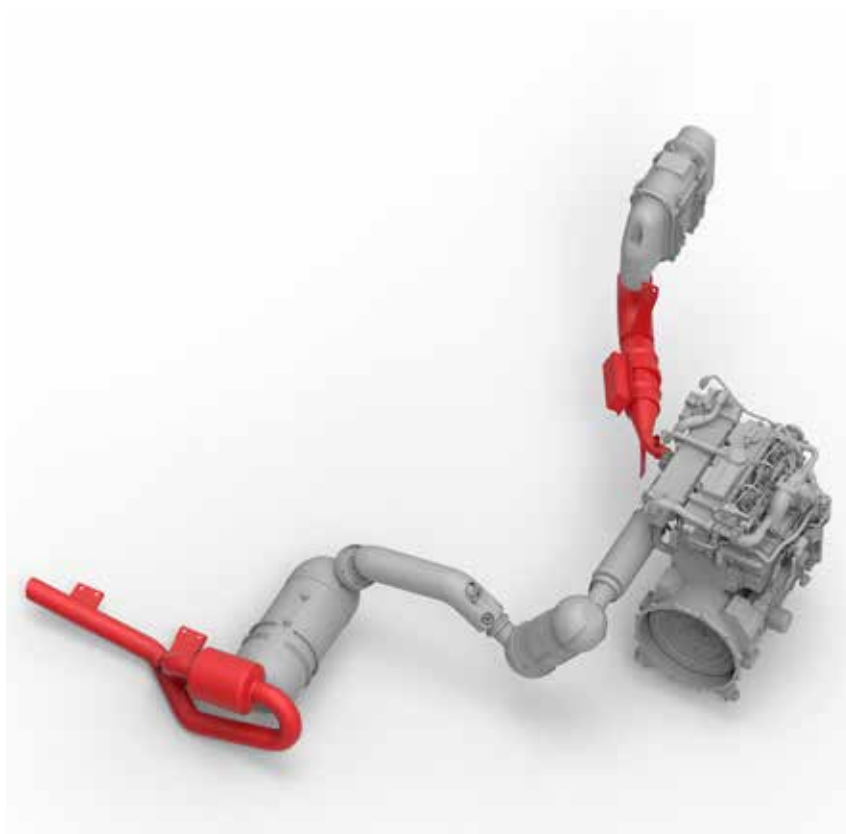
*OPT-03-008*

Extremely resistant and flexible wireless anemometer. Body and vanes are made of high quality plastic material and the rotor is mounted on stainless steel ball bearings.

Specifically developed to be connected to the portable display, it uses an industrial radio frequency communication system on the 2.4 GHz band, in compliance with IEEE 802.15.4 standards. The connection system to the display is Plug & Play and therefore no configuration is required. Developed with a new lithium battery that has an autonomy of up to 36 months.

The battery is not included.

**Existing kit**  
**RTH - HTH - TH**



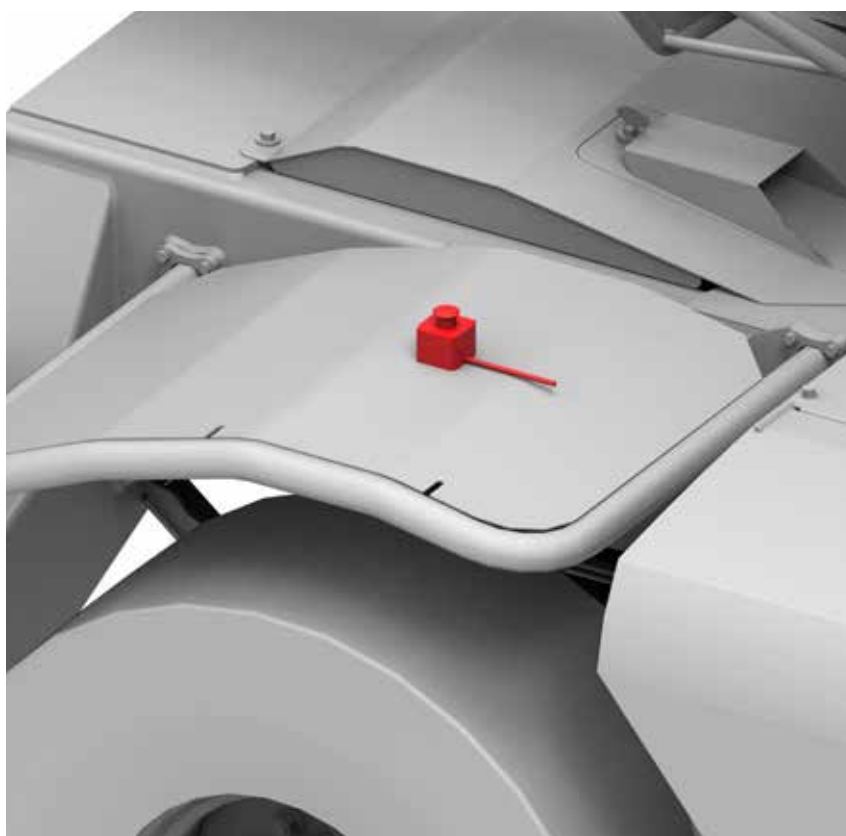
## ANTISPARK SYSTEM (ANTISPARK + VALVE ON THE ENGINE)

*OPT-03-002*

The engine is fitted with devices to prevent any sparks from exiting from the exhaust system, reducing greatly the risk for fire and explosions.

Option available only for Deutz engines.  
Option not necessary for Stage V engines.

**Existing kit**  
**RTH - TH**



## EMERGENCY STOP BUTTONS

*OPT-03-015*

Option composed by 2 external buttons for the complete shut off of the machine mounted on the lateral sides of the chassis.

**Existing kit**  
**RTH - HTH - TH**



## HYDRAULIC TRAILER BRAKING

*OPT-03-010*

Option including hydraulic brake line for trailers.

**Existing kit**  
**RTH**



## SOLID TYRES

*OPT-03-011*

The mixture is composed of the highest quality raw materials to ensure excellent abrasion resistance and long life. The tyre is further reinforced to reduce the amount of heat generated and provide excellent puncture resistance. The tread design offers good grip over a wide variety of surfaces, excellent stability and reduced rolling noise. Maximum speed: 25 km/h.

Rims included in the code.

Tyres type:  
445/65-24 L1H for TH 6.20

**Existing kit**  
**HTH - TH**





## FOAM FILLED TYRES

---

*OPT-03-012*



This tyre virtually eliminates the risk of damage and blowouts, ensuring the machine remains in full working order and guaranteeing the highest levels of safety during all demanding uses. It is filled with a polyurethane foam which undergoes a chemical reaction and solidifies in 24 hours. The result is an elastomer which will not extrude either from cuts or holes, yet allows the tyre to deflect like a corresponding air-filled model. Maximum speed: **15 km/h**. Rims included in the code.

Tyres type:  
445/65 R22.5 AE77 for RTH 8.25  
17,5 R25 182.A2-AL37 for RTH 6.46  
18.00 R25 for HTH 24.11

**Existing kit**  
**RTH - HTH - TH**

## FOAM FILLED TYRES

---

*OPT-03-020*



This tyre virtually eliminates the risk of damage and blowouts, ensuring the machine remains in full working order and guaranteeing the highest levels of safety during all demanding uses. It is filled with a polyurethane foam which undergoes a chemical reaction and solidifies in 24 hours. The result is an elastomer which will not extrude either from cuts or holes, yet allows the tyre to deflect like a corresponding air-filled model. Maximum speed: **25 km/h**. Rims included in the code.

**Existing kit**  
**TH**



## RIGHT SPARE WHEEL

---

*OPT-03-016*

Homologated right spare wheel.  
Rims included in the code.

**Existing kit**

**RTH - HTH 10.10**



## LEFT SPARE WHEEL

---

*OPT-03-017*

Homologated left spare wheel.  
Rims included in the code.

**Existing kit**

**RTH - HTH 10.10**



## RIGHT SPARE WHEEL FOR RTH 4.18

*OPT-03-018*

Approved right spare wheel for RTH 4.18.  
Rims included in the code.



**Existing kit**  
**RTH 4.18**

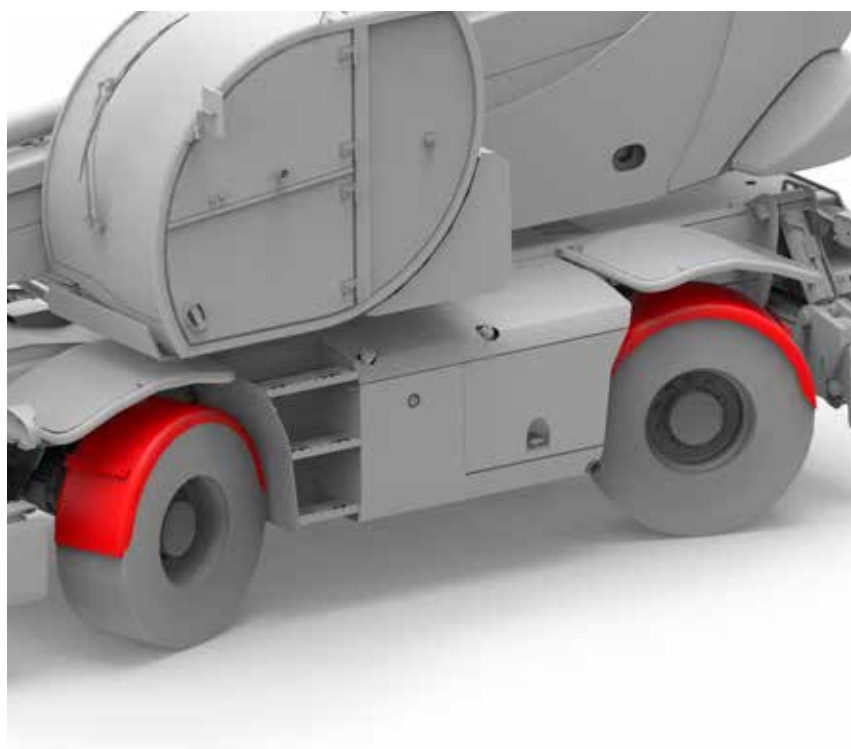
## LEFT SPARE WHEEL FOR RTH 4.18

*OPT-03-019*

Approved left spare wheel for RTH 4.18.  
Rims included in the code.



**Existing kit**  
**RTH 4.18**



## **ROAD TYRES + EXTENDED MUDGUARD**

*OPT-03-013*

Option including 4 no. mudguards and 4 no. road tyres. This option helps to preserve carpentry and chromium plating of the vehicle.

Tyres type:  
445/65 R22.5 AE77

**Existing kit**  
**RTH - HTH - TH**







		RTH 4.18	RTH 5.18	RTH 5.21	RTH 5.23	RTH 5.25	RTH 6.21	RTH 6.23	RTH 6.25	RTH 6.30
OPT-03-001	Wheel chocks (2) HTH	-	-	-	-	-	-	-	-	-
OPT-03-014	Wheel chocks (2) RTH-TH	●	●	●	●	●	●	●	●	●
OPT-03-003	External battery cut-off	●	●	●	●	●	●	●	●	●
OPT-03-004	Ladder + supports	●	●	●	●	●	●	●	●	●
OPT-03-005	Protection grid for windshield	●	●	●	●	●	●	●	●	●
OPT-03-006	Complete cab's glass protection	●	●	●	●	●	●	●	●	●
OPT-03-009	Headlamp protection (RTH + TH)	●	●	●	●	●	●	●	●	●
OPT-03-007	Angle sensor for quick fit	-	-	-	-	-	-	-	-	-
OPT-03-008	Wireless anemometer	●	●	●	●	●	●	●	●	●
OPT-03-002	Antispark system (antispark + valve on the engine)	●	●	●	●	●	●	●	●	●
OPT-03-010	Hydraulic trailer braking	○	○	○	○	○	○	○	○	○
OPT-03-011	Solid tyres	-	-	-	-	-	-	-	-	-
OPT-03-012	Foam filled tyres	●	●	●	●	●	●	●	●	●
OPT-03-013	Road tyres + extended mudguard	●	●	●	●	●	●	●	●	●
OPT-03-015	Emergency stop buttons	○	○	○	○	○	○	○	○	○
OPT-03-016	Right Spare wheel	●	●	●	●	●	●	●	●	●
OPT-03-017	Left spare wheel	-	●	●	●	●	●	●	●	●
OPT-03-018	Right spare wheel for RTH 4.18	●	-	-	-	-	-	-	-	-
OPT-03-019	Left spare wheel for RTH 4.18	●	-	-	-	-	-	-	-	-
OPT-03-020	Foam filled tyres	-	-	-	-	-	-	-	-	-



## SAFE & SECURE

RTH 6.35	RTH 6.39	RTH 6.46	RTH 6.51	RTH 7.26	RTH 8.25	RTH 13.26	HTH 10.10	HTH 16.10	HTH 20.10	HTH 24.11	HTH 27.11	HTH 30.12	HTH 35.12	HTH 50.14	TH 6.20	TH 5.24	TH 12.80
-	-	-	-	-	-	-	●	●	●	●	○	○	○	○	○	○	○
●	●	●	●	●	●	●	-	-	-	-	-	-	-	-	●	●	●
●	●	●	●	●	●	●	●	●	●	●	●	●	●	●	●	●	●
●	●	●	●	●	●	●	-	-	-	-	-	-	-	-	-	-	-
●	●	●	●	●	●	●	●	●	●	●	●	●	●	●	●	●	●
●	●	●	●	●	●	●	●	●	●	●	●	●	●	●	●	●	●
●	●	●	●	●	●	●	●	●	●	●	●	●	●	●	●	●	●
-	-	-	-	-	-	-	●	●	●	●	●	●	●	●	●	●	●
●	●	●	●	●	●	●	○	○	○	○	○	○	○	○	○	○	○
●	●	●	●	●	●	●	○	○	○	○	○	○	○	○	●	●	●
○	●	○	○	○	○	○	○	○	○	○	○	○	○	○	○	○	○
-	-	-	-	-	-	-	●	●	●	●	●	●	●	●	●	●	●
●	●	●	●	●	●	●	●	●	●	●	●	●	●	●	●	●	●
●	●	●	●	●	●	●	●	●	●	●	●	●	●	●	●	●	●
○	○	○	○	○	○	○	○	○	○	○	○	○	○	○	○	○	○
●	●	●	●	●	●	●	●	●	●	●	●	●	●	●	-	-	-
●	●	●	●	●	●	●	●	-	-	-	-	-	-	-	●	●	●
-	-	-	-	-	-	-	-	-	-	-	-	-	-	-	-	-	-
-	-	-	-	-	-	-	-	-	-	-	-	-	-	-	-	-	-
-	-	-	-	-	-	-	-	-	-	-	-	-	-	-	●	●	●

● = Existing kit

○ = Kit to create

✓ = On board







---

## ROAD & TRAFFIC POLICY

To be always up to date with the different countries policies, **Magni** has a kit solution for each need.

# 04

## ROAD USE TUV - A&K

---

*OPT-04-001*

Option for road use including electronic, mechanical, lighting and signalling devices, as well as adhesive warning stickers and signage, required for road use as specified by the relevant highway codes.

**Existing kit**  
**RTH - HTH - TH**

## ROAD USE ITALY

---

*OPT-04-002*

Option for road use including electronic, mechanical, lighting and signalling devices, as well as adhesive warning stickers and signage, required for road use as specified by the relevant highway codes.

**Existing kit**  
**RTH - HTH - TH**

## ROAD USE GERMANY

---

*OPT-04-004*

Option for road use including electronic, mechanical, lighting and signalling devices, as well as adhesive warning stickers and signage, required for road use as specified by the relevant highway codes.

**Existing kit**  
**RTH - HTH - TH**

## ROAD USE SWITZERLAND

---

*OPT-04-005*

Option for road use including electronic, mechanical, lighting and signalling devices, as well as adhesive warning stickers and signage, required for road use as specified by the relevant highway codes.

**Existing kit**  
**RTH - HTH - TH**



		RTH 4.18	RTH 5.18	RTH 5.21	RTH 5.23	RTH 5.25	RTH 6.21	RTH 6.23	RTH 6.25	RTH 6.30
OPT-04-001	Road Use TUV - A&K	•	•	•	•	•	•	•	•	•
OPT-04-002	Road Use Italy	•	•	•	•	•	•	•	•	•
OPT-04-004	Road Use Germany	•	•	•	•	•	•	•	•	•
OPT-04-005	Road Use Switzerland	•	•	•	•	•	•	•	•	•





## ROAD & TRAFFIC POLICY

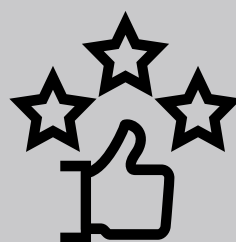
RTH 6.35	RTH 6.39	RTH 6.46	RTH 6.51	RTH 7.26	RTH 8.25	RTH 13.26	HTH 10.10	HTH 16.10	HTH 20.10	HTH 24.11	HTH 27.11	HTH 30.12	HTH 35.12	HTH 50.14	TH 6.20	TH 5.24	TH 12.80
●	●	●	●	●	●	●	●	●	●	●	●	●	●	●	●	●	●
●	●	●	●	●	●	●	●	●	●	●	●	●	●	●	●	●	●
●	●	●	●	●	●	●	●	●	●	●	●	●	●	●	●	●	●
●	●	●	●	●	●	●	●	●	●	●	●	●	●	●	●	●	●

● = Existing kit

○ = Kit to create

✓ = On board



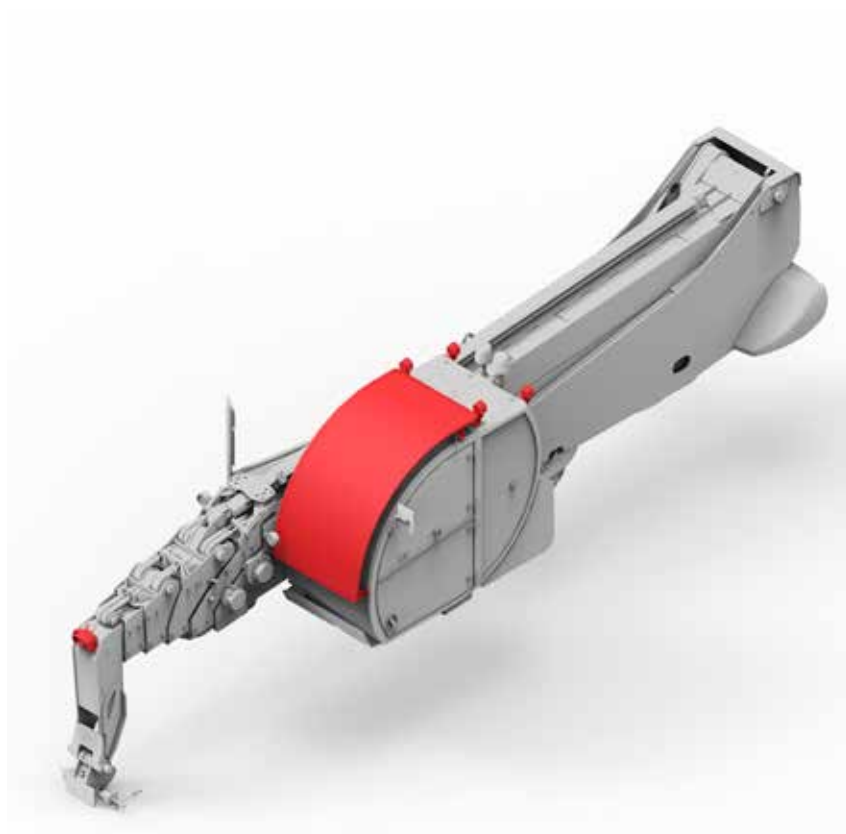


---

## SPECIAL

For each special application **Magni** has the right solution, that allow you to do the job in complete safety and even improve the machine's performances.

# 05



## PRE ARRANGEMENT FOR TREE CUTTING DEVICE

*OPT-05-001*

This option prepares the machine for connection with the tree cutting attachment.

The kit comprises: front and rear cab work lights, left-hand joystick with double roller, FNR right-hand joystick + roller, polycarbonate windscreen protection + protection grille, boom head and rear video cameras.

**Existing kit**

**RTH**



## BOOM PROTECTION FOR TREE CUTTING DEVICE AND DUSTY ENVIRONMENTS

*OPT-05-005*

Set of caps and protections for the boom holes to protect from intrusion of dust and debris in the boom.

**Existing kit**

**RTH**







## ELEVATING CAB

*OPT-05-004*

Option which allows the cab to be installed on a mobile hydraulic support to obtain an elevation of up to 1.5 m and a further degree of freedom of cab inclination from 0° to a maximum of 15°. With this optional, the maximum speed of the machine is limited to 25 km/h.

**Existing kit**  
**RTH**



## MY MAGNI

*OPT-05-010*

The new GPS system that can provide a total overview that enables you to map and track every movement of your fleet, and displays the most critical items on your dashboard.

Technical alarms and maintenance data help to keep your fleet running and in perfect condition at all times.

Whereas, safety warnings alert you of malfunctions and safety-related defects.

MyMagni is available on Desktop, Apple Store and Google Play Store.



**Existing kit**  
**TH**







## SPECIAL PAINTING (COMPLETE MACHINE)

*OPT-05-002*

Option consisting of custom colour for the following machine parts: chassis, stabilisers and cab.



**On request**

**RTH - HTH - TH**



## SPECIAL PAINTING (REPLACING ONLY MAGNI RED)

*OPT-05-003*

Option consisting of custom colour for the following machine parts: chassis-turret and boom, and engine compartment/tank.

**On request**

**RTH - HTH - TH**

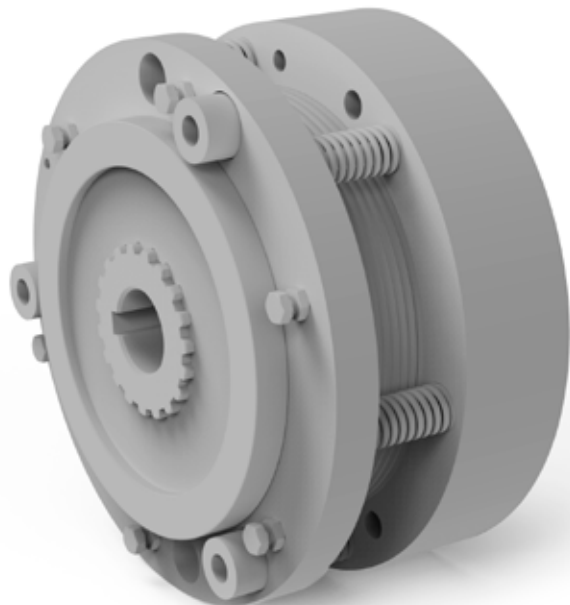




## INDUCTION BRAKE SYSTEM FOR RTH

---

*OPT-05-006*



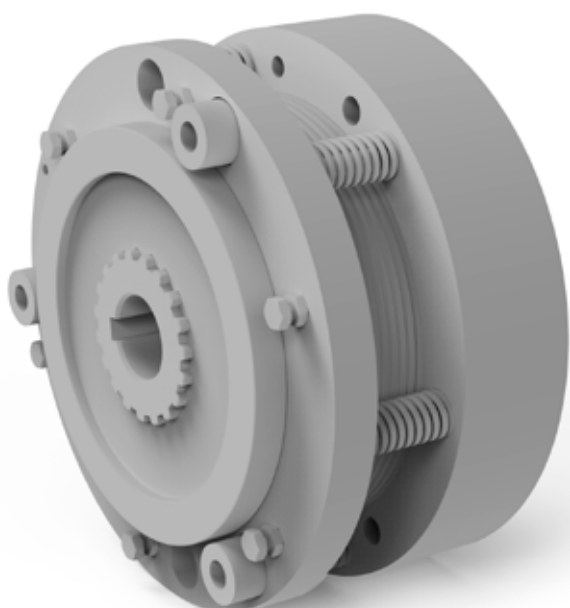
Induction brakes commonly called electric or electromagnetic retarders allow slowing down braking, dissipating a large part of the braking energy and thus relieving the load on conventional braking systems. Thanks to induction brakes it is possible to effectively slow down a rotating transmission shaft, without friction and therefore without wear.

**On request**  
**RTH**

## INDUCTION BRAKE SYSTEM FOR HTH

---

*OPT-05-007*



Induction brakes commonly called electric or electromagnetic retarders allow slowing down braking, dissipating a large part of the braking energy and thus relieving the load on conventional braking systems. Thanks to induction brakes it is possible to effectively slow down a rotating transmission shaft, without friction and therefore without wear.

**On request**  
**HTH**

		RTH 4.18	RTH 5.18	RTH 5.21	RTH 5.23	RTH 5.25	RTH 6.21	RTH 6.23	RTH 6.25	RTH 6.30
<b>OPT-05-001</b>	Pre arrangement for tree cutting device	•	•	•	•	•	•	•	•	•
<b>OPT-05-005</b>	Boom protection for tree cutting device and dusty environments	•	•	•	•	•	•	•	•	•
<b>OPT-05-004</b>	Elevating cab	○	○	•	○	•	•	•	•	•
<b>OPT-05-002</b>	Special painting (complete machine)	○	○	○	○	○	○	○	○	○
<b>OPT-05-003</b>	Special painting (replacing only Magni red)	○	○	○	○	○	○	○	○	○
<b>OPT-05-006</b>	Induction brake system for RTH	○	○	○	○	○	○	○	○	○
<b>OPT-05-007</b>	Induction brake system for HTH	-	-	-	-	-	-	-	-	-
<b>OPT-05-010</b>	MyMagni	✓	✓	✓	✓	✓	✓	✓	✓	✓



SPECIAL																		
RTH 6.35	RTH 6.39	RTH 6.46	RTH 6.51	RTH 7.26	RTH 8.25	RTH 13.26	HTH 10.10	HTH 16.10	HTH 20.10	HTH 24.11	HTH 27.11	HTH 30.12	HTH 35.12	HTH 50.14	TH 6.20	TH 5.24	TH 12.80	
●	●	●	●	●	●	●	○	○	○	○	○	○	○	○	○	○	○	
●	●	●	●	●	●	●	○	○	○	○	○	○	○	○	○	○	○	
○	●	●	○	●	●	●	○	○	○	○	○	○	○	○	○	○	○	
○	○	○	○	○	○	○	○	○	○	○	○	○	○	○	○	○	○	
○	○	○	○	○	○	○	○	○	○	○	○	○	○	○	○	○	○	
○	○	○	○	○	○	○	-	-	-	-	-	-	-	-	-	-	-	
-	-	-	-	-	-	-	○	○	○	○	●	○	●	○	-	-	-	
✓	✓	✓	✓	✓	✓	✓	✓	✓	✓	✓	✓	✓	✓	✓	●	●	●	

● = Existing kit

○ = Kit to create

✓ = On board







# ALPHABETICAL INDEX

Option Code	Description	PAG.
<b>OPT - 01 - 016</b>	12" Display	20
<b>OPT - 02 - 002</b>	110/220 V plug at boom head	26
<b>OPT - 01 - 002</b>	Additional heater 24V (Eberspächer)	08
<b>OPT - 01 - 017</b>	Air conditioning for RTH 4.18	20
<b>OPT - 01 - 009</b>	Air suspended seat	16
<b>OPT - 01 - 019</b>	Air suspended seat with heating 24V	19
<b>OPT - 03 - 007</b>	Angle sensor for quick fit	54
<b>OPT - 03 - 002</b>	Antispark system (antispark + valve on the engine)	55
<b>OPT - 02 - 018</b>	Automatic greasing system	26
<b>OPT - 02 - 026</b>	Bio hydraulic oil	41
<b>OPT - 01 - 001</b>	Boom suspension	09
<b>OPT - 05 - 005</b>	Boom protection for tree cutting device and dusty environments	72
<b>OPT - 03 - 006</b>	Complete cab's glass protection	50
<b>OPT - 02 - 013</b>	Complete tool box	35
<b>OPT - 02 - 015</b>	Complete towing hook	35
<b>OPT - 02 - 022</b>	Double hydraulic output at the boom head	39
<b>OPT - 02 - 012</b>	Drive from the basket	34
<b>OPT - 05 - 004</b>	Elevating cab	74
<b>OPT - 03 - 015</b>	Emergency stop buttons	55
<b>OPT - 03 - 003</b>	External battery cut-off	49
<b>OPT - 03 - 012</b>	Foam filled tyres	57
<b>OPT - 03 - 020</b>	Foam filled tyres	57
<b>OPT - 02 - 006</b>	Front and rear led headlamps	28
<b>OPT - 03 - 009</b>	Headlamp protection (RTH + TH)	51
<b>OPT - 01 - 013</b>	Heated rear view mirrors (all) 24V	18
<b>OPT - 01 - 012</b>	Heated seat 24V	17
<b>OPT - 02 - 027</b>	Heater for engine coolant (230V)	41
<b>OPT - 02 - 033</b>	Heater for engine coolant (110V)	41

Option Code	Description	PAG.
<b>OPT - 02 - 019</b>	Holder for stabilizers' plastic pads (including the pads) RTH	37
<b>OPT - 02 - 032</b>	Holder for stabilizers' plastic pads (including the pads) TH	37
<b>OPT - 02 - 021</b>	Hydraulic block for turret rotation	38
<b>OPT - 02 - 020</b>	Hydraulic lock for attachments	38
<b>OPT - 02 - 025</b>	Hydraulic oil for cold climate	40
<b>OPT - 02 - 029</b>	Hydraulic oil heater (230V)	42
<b>OPT - 03 - 010</b>	Hydraulic trailer breaking	56
<b>OPT - 05 - 007</b>	Induction brake system for HTH	77
<b>OPT - 05 - 006</b>	Induction brake system for RTH	77
<b>OPT - 03 - 004</b>	Ladder + supports	49
<b>OPT - 02 - 007</b>	LED lights on the boom	29
<b>OPT - 02 - 005</b>	LED lights on the bottom of the cab front	28
<b>OPT - 02 - 003</b>	LED lights on top of the cab front	27
<b>OPT - 02 - 004</b>	LED lights on top of the cab rear	27
<b>OPT - 03 - 017</b>	Left spare wheel	58
<b>OPT - 03 - 019</b>	Left spare wheel for RTH 4.18	59
<b>OPT - 05 - 010</b>	MyMagni	74
<b>OPT - 02 - 014</b>	Nordic package	40
<b>OPT - 01 - 004</b>	No. 1 Camera on right hand side	10
<b>OPT - 01 - 005</b>	No. 1 Camera on the rear	10
<b>OPT - 01 - 006</b>	No. 2 Cameras (front + rear wireless + monitor in the cab)	11
<b>OPT - 01 - 007</b>	No. 3 Cameras (2 front + 1 rear wireless + monitor in the cab)	12
<b>OPT - 01 - 008</b>	No. 4 Cameras 360° view	13
<b>OPT - 01 - 018</b>	No. 4 Cameras	13
<b>OPT - 05 - 001</b>	Pre arrangement for tree cutting device	72
<b>OPT - 02 - 031</b>	Pre arrangement for Twin power 400 V	43
<b>OPT - 03 - 005</b>	Protection grid for windshield	50
<b>OPT - 02 - 024</b>	Quick boom in/out	34

# ALPHABETICAL INDEX

Option Code	Description	PAG.
<b>OPT - 01 - 015</b>	Radio dab	19
<b>OPT - 02 - 017</b>	Rear electric plug 24V for trailer (13 pins)	36
<b>OPT - 02 - 016</b>	Rear electric plug 24V for trailer (7 pins)	36
<b>OPT - 01 - 003</b>	Remote control for additional heater 24V (Eberspächer)	08
<b>OPT - 02 - 009</b>	Remote control for driving operations from basket with display	31
<b>OPT - 02 - 011</b>	Remote control for tree cutting with display	31
<b>OPT - 02 - 011</b>	Remote control with dead man switch on joystick	29
<b>OPT - 03 - 016</b>	Right spare wheel	58
<b>OPT - 03 - 018</b>	Right spare wheel for RTH 4.18	59
<b>OPT - 03 - 013</b>	Road tyres + extended mudguard	60
<b>OPT - 04 - 004</b>	Road use Germany	66
<b>OPT - 04 - 002</b>	Road use Italy	66
<b>OPT - 04 - 005</b>	Road use Switzerland	66
<b>OPT - 04 - 001</b>	Road use TUV-A&K	66
<b>OPT - 01 - 014</b>	Roll-up sunblind	18
<b>OPT - 01 - 011</b>	Seat headrest	17
<b>OPT - 03 - 011</b>	Solid tyres	56
<b>OPT - 05 - 002</b>	Special painting (complete machine)	76
<b>OPT - 05 - 003</b>	Special painting (replacing only Magni red)	76
<b>OPT - 02 - 008</b>	Standard remote control	30
<b>OPT - 01 - 010</b>	Tilting seat	16
<b>OPT - 02 - 023</b>	Triple hydraulic output at the boom head	39
<b>OPT - 02 - 030</b>	Twin power 400V	43
<b>OPT - 03 - 001</b>	Wheel chocks (2) HTH	48
<b>OPT - 03 - 014</b>	Wheel chocks (2) RTH - TH	48
<b>OPT - 03 - 008</b>	Wireless anemometer	54









