

Edition 05/2020 © 2020 JMG Cranes S.p.A. All rights reserved
Data subject to change without prior notice
Rev. 1 - 05/2020

LIGE by JMG Cranes S.p.A.

Sales & Service Office

Via Bergamo, 142

26100 Cremona - Italy

t +39 0372 1786738

Production Plant

Via Sito Nuovo 14

29010 Sarmato (PC) - Italy

t +39 0523 8486

e info@jmgcranes.com



www.jmgcranes.com



ELECTRIC PICK & CARRY CRANES



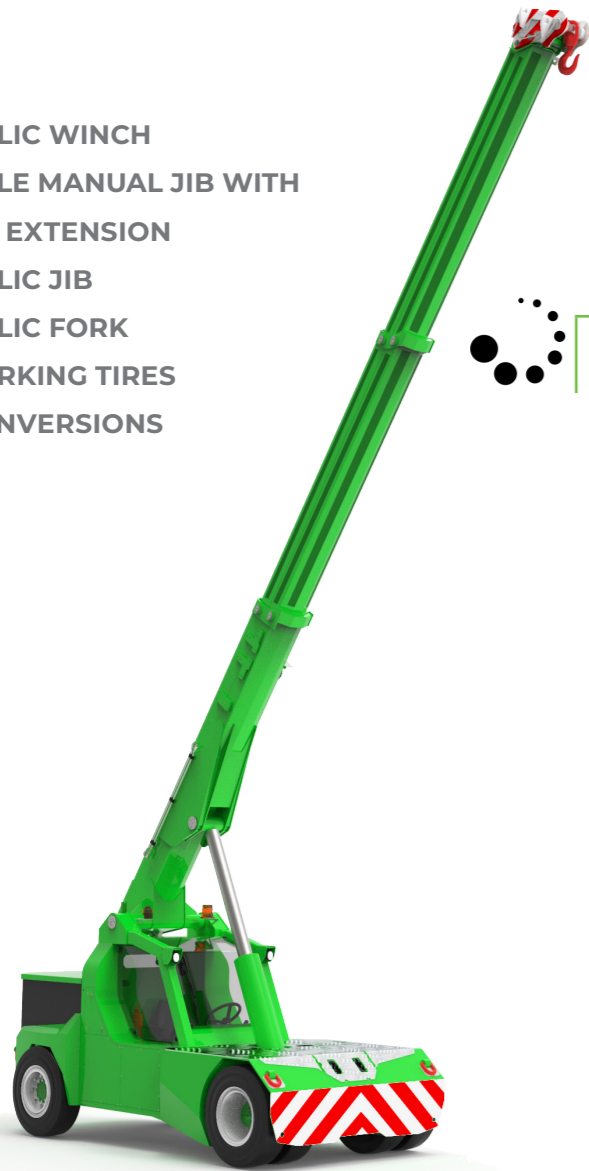
L120 (metric)
Max Capacity 12.000 kg

LIGE
SINCE 1945 by JMG

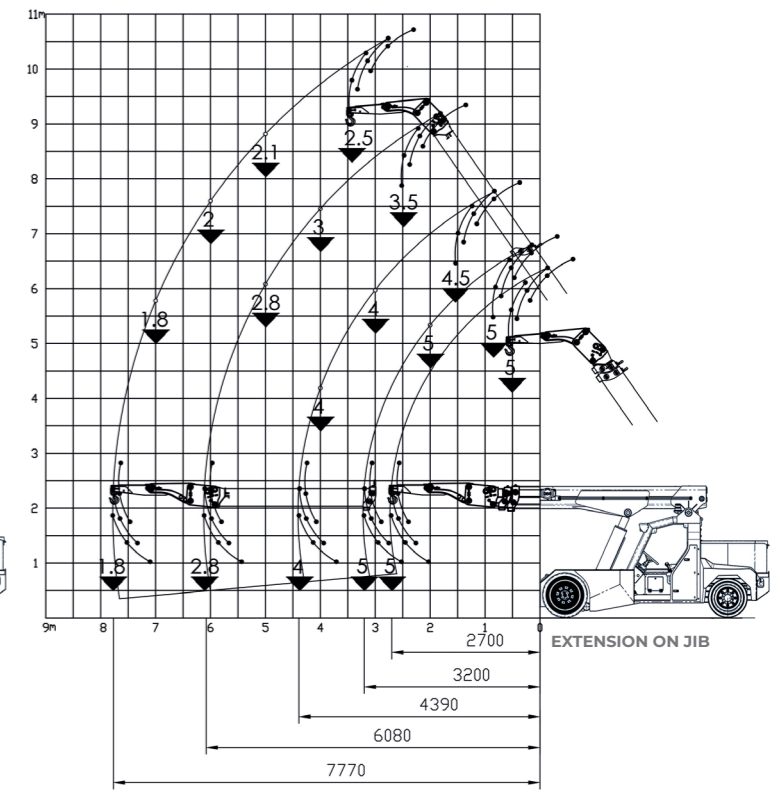
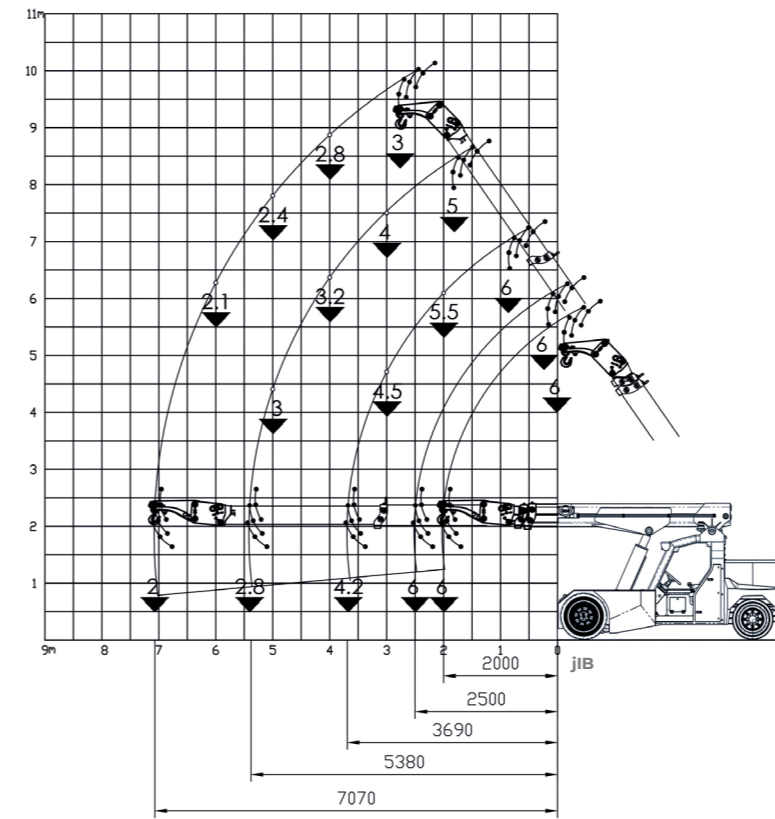
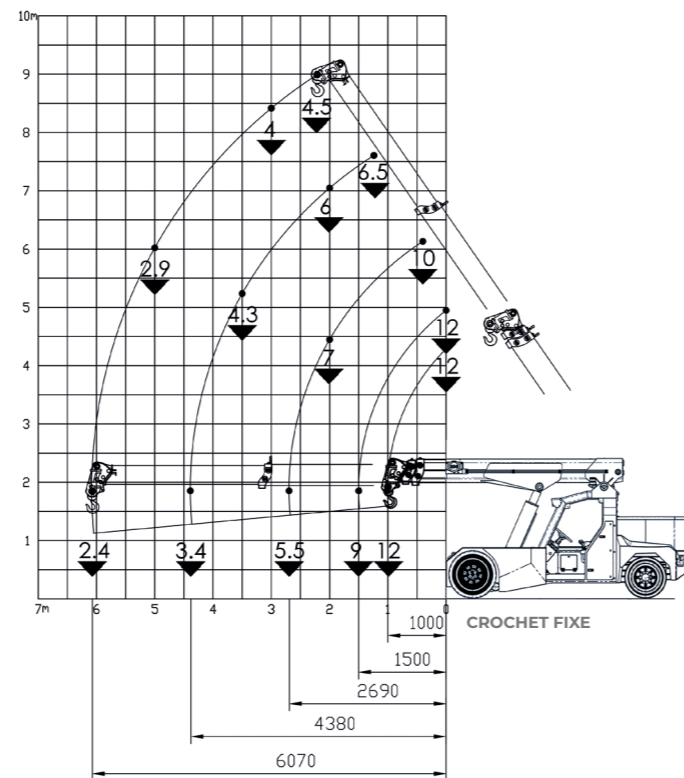
ELECTRIC POWERED WITH ZERO EMISSIONS
8 WORKING HOURS
WIDE AND ERGONOMIC CABIN
FRONT WHEELS DRIVE WITH COUNTER ROTATION
COMPACTNESS AND AGILITY
REAR STEERING

Optionals:

- HYDRAULIC WINCH
- BENDABLE MANUAL JIB WITH MANUAL EXTENSION
- HYDRAULIC JIB
- HYDRAULIC FORK
- NON-MARKING TIRES
- ATEX CONVERSIONS



Load charts



Technical features

Max Capacity kg	12,000	Front-wheels drive. N°2 electric motors AC 8.5 kW 80V. Insulation class H	L.M.L. Electronic safe load indicator and tilting moment limiter
	Dimensions mm	80 V - 840 Ah 8 working hours	Service brake: hydraulic with foot control. Parking and emergency brake: hydraulic with automatic control.
Dimensions mm		Front nr. 4 superelastic 4x300-15" Rear nr. 2 superelastic 2x250-15"	Self-supporting steel structure bent and welded
	Dimensions mm	Rear Steering angle -90°/+90°	+55°/-15°
			Motor driven pump 1x20kW - 80 V AC, Insulation class H

EU Standards CE

	UNI ISO 4301-2: A1
	2006/42 CE-2014/30 UE-2014/35 UE- 2000/14 and subsequent modifications
	EN 13000:2014 ANSI/ASME B30.5-2011 and subsequent modifications

Dimensions

