

Data subject to change without prior notice
Edition 10/2022 © 2022 JMG Cranes S.p.A. All rights reserved
Rev. 2 - 10/22



Electric Pick & Carry Cranes

JMG Cranes S.p.A.

Sales & Service Office
Via Bergamo, 142
26100 Cremona - Italy
t +39 0372 1786738
Production Plant
Via Zuccherificio 2
29010 Sarmato (PC) - Italy
t +39 0523 8486
e info@jmgcranes.com



**MC750 TC
(metric)**
Max Capacity 750 kg

www.jmgcranes.com



MC750 TC

FULL FREE LIFT MAST

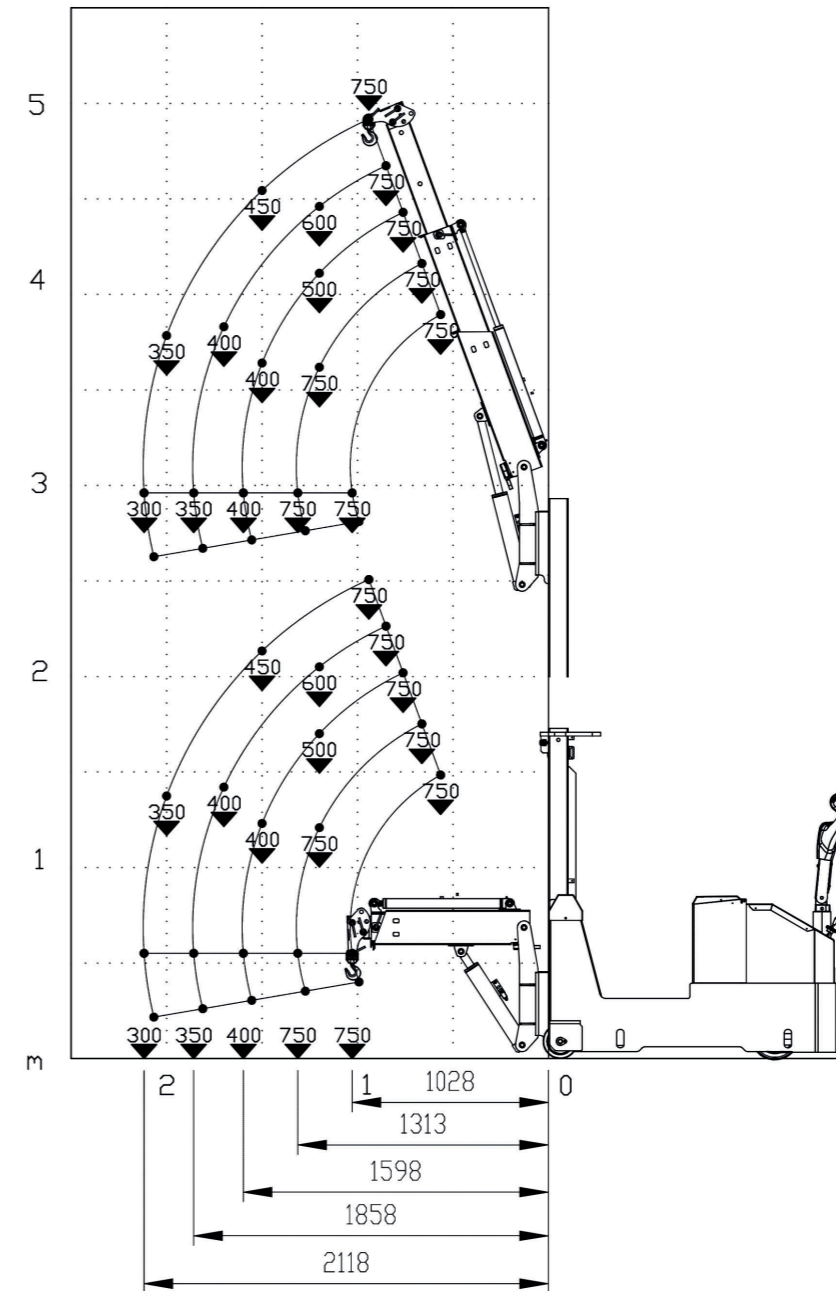
SERVO-ASSISTED STEERING DRAWBAR

COUNTER-BALANCED SYSTEM WITHOUT BASELEGS

LONG LASTING BATTERY: 24V ARMORED BATTERIES WITH A CAPACITY OF 270AH



Load charts



EU Standards CE

	UNI ISO 4301-2: A1
	2006/42 CE-2014/30 UE- 2000/14-4301 -1:A1 e and subsequent modifications
	EN 13000:2014 ANSI/ASME B30.5-2011 e and subsequent modifications



Technical features

Closed boom orizzontale horizontal	750 kg
Dimensions	2565x885x1728 mm
Total weight	2300 kg
L.M.I.	Electronic safe load indicator and tilting moment limiter



Dimensions

