



**16.10**



Marine



Construction



Mining



Heavy  
Logistics



Industry

Maximum lifting capacity: 16,000kg

Maximum lifting height: 9.70 m

Maximum reach: 5.00 m

The HTH 16.10 telescopic handler is ideal for moving large, bulky loads in complete safety. With the ability to lift up to 16 tonnes, it is compatible with a wide range of accessories, making it extremely versatile.

# CAB COMFORT

REGISTERED CAB WITH FULL VISIBILITY

The innovative design of Magni's cabs ensures unbeatable operator comfort and safety. The cab has **full visibility** thanks to a large windscreen which extends from the operator's head to their feet, allowing them to view the load even when it is suspended overhead or with the boom completely lowered.

360° FULL VISIBILITY

ADJUSTABLE STEERING COLUMN

Achieving the most **comfortable and ergonomic driving position** is essential while working. The Magni RTH cab allows you to easily adjust the steering wheel to the most ergonomic and comfortable position. Nevertheless, when the column is straight, you can effortlessly access the cab. The seat can also be moved forwards and backwards to achieve the perfect support for your back.

MAGNI COMBI TOUCH SYSTEM

The Magni Combi Touch System is a brand new concept in machine management; it is easy to use for both expert and new operators, thanks to its icon-based design which makes it highly intuitive. The system is divided into 3 main pages, each one dedicated to different functions. Each page can also be easily brought up via a specific button on the joystick.

HEATING AIR-CONDITIONING

Our HTH range can be used in each part of the world, from coldest Siberia, to the hotter African desert. Each machine equips with **heating and air conditioning**, to grant comfortable working conditions throughout all the year.

FOPS/ROPS PRESSURISED CAB

The cab is **FOPS/ROPS** certified and equipped with an upper grill guard to guarantee operator safety even during the most delicate operations. The cabin is also airtight and fully pressurised, to ensure a safe working environment for the operator at all times.

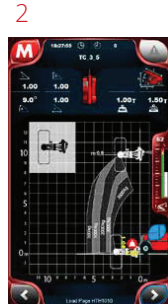
100% AIR FILTRATION

Magni machines are equipped with **100% air filtration**. This feature, which is standard on all HTH models, enables to use the machine even in polluted or contaminated environment. You simply have to change the filter according to your needs.



## DRIVE PAGE

All data on the transmission and its components are shown in the upper section, just like a traditional instrument cluster, whereas the lower section allows the driver to select the type of steering. This selection is facilitated by the presence of two alignment sensors. It is also possible to set the speed (tortoise/hare).



## LOAD CHART PAGE

Magni uses the "Load Moment Indicator" system which meets all regulations for cranes. The screen displays a dynamic load chart which allows the operator to keep a constant view of the payload's centre of gravity.



## CONTROL PAGE

The upper section is used to manage basic cab commands (such as temperature and ventilation), the middle section is dedicated to the machine lights, while the lower section displays the various available options for switching from the cab controls to remote control.

# PERFORMANCE ON TYRES



± 5° / ± 10°



0°



± 5° / ± 10°

## LEVELLING SYSTEM ON TYRES

The levelling system on tyres is standard for all models in the HTH range, and helps the operator to work in total safety even on irregular terrain. This mechanism lets the driver adjust the machine levelling and have the full load chart for all operations, even with ground inclinations which would normally affect the lifting performance.

Magni has also introduced an **additional** levelling safety device: if the operator tries to manually correct the inclination of the machine on uneven terrain, the system detects the machine inclination and only allows compensation to be performed in the correct direction, preventing any movement which could worsen the situation.

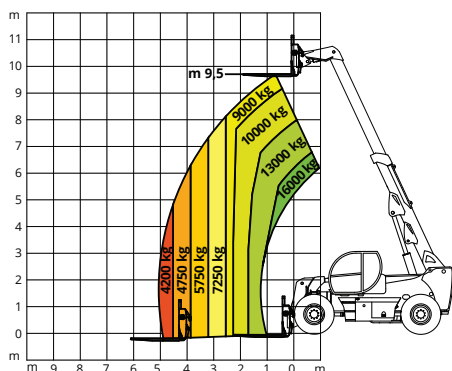
# HTH 16.10 SPECIFICATIONS

HTH 16.10		
<b>MACHINE MODEL</b>	Maximum lifting capacity	16,000 kg
	Load center	600 mm
	Maximum lifting height	9.70 m
	Maximum reach	5.00 m
<b>ENGINE</b>	Type	Volvo TAD582 VE - Stage V Volvo TAD572 VE - Stage IV Volvo TAD552 VE Stage IIIA
	Rated power	160 kW (218 hp) @ 2,200 rpm
	Maximum torque	910 Nm @ 1,450 rpm
	Displacement	5.13 l
	Cylinders	4 in line
	Engine configuration	Turbocharged diesel direct injection common rail
	Cooling system	Water - intercooler
<b>CAB</b>	FOPS-ROPS tested hermetic cab with protectors	•
	Front, rear and upper wiper	•
	Headlights for road circulation, flashing beacon	•
	Rear view mirrors	•
	Heating - Air conditioning	•
<b>CONTROLS</b>	Multi-function electro proportional joystick	•
	Heavy Duty with epicyclic reduction	•
	One steering cylinders each axle	•
	Levelling correction front axle	+ 8° on the right and + 8° on the left
<b>AXLES AND BRAKES</b>	3 types of steering	- with front steering - with round steer - with crab steering
	Tilting rear axle	•
	Hydraulic servo-assisted multidisc brake in oil bath on both axles, with double circuit	•
	Negative parking brake	•
	Tyre size	16,00 - R25 ** two each axle, driving and steering
<b>PERFORMANCE</b>	Max. travel speed	25 km/h
	Drawbar pull	113 kN
	Gradeability	60%
	Turning radius (at wheels)	5,060 mm
<b>WEIGHTS</b>	Total unladen	19,200 kg
	Front axle unladen (boom retracted and lowered)	7,200 kg
	Rear axle unladen (boom retracted and lowered)	12,000 kg
<b>TRANSMISSION</b>	Hydrostatics	Rexroth / Danfoss
	Variable displacement hydrostatic pump with electronic control	•
	Variable displacement hydrostatic motor	One
	Gearbox	Gearbox with 2 speeds forward / reverse
<b>HYDRAULIC CIRCUIT</b>	Load sensing piston pump	•
	Circuit at 350 bar	•
	Proportional hydraulic electrovalve	Danfoss
	Suction and return line filters	•
	High pressure flexible hoses	•
<b>TANKS CAPACITIES</b>	Diesel fuel tank	270 l
	AdBlue*	40 l
	Hydraulic fluid	195 l
	Engine oil	16 l
<b>SAFETY</b>	Coolant	40 l
	Electronic safety system which controls the load with definition of the lifted load, radius and comparison with the diagrams stored	•
	Block of aggravating movements of the load	•
	Safety valves on cylinders	•

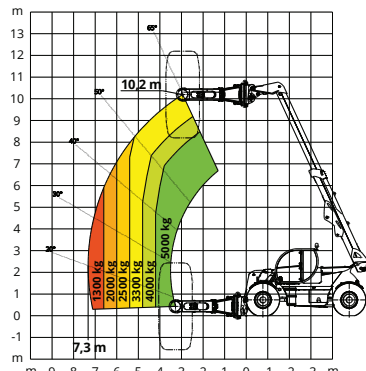
# LOAD CHARTS

HTH 16.10

LOAD CHART WITH FORKS



LOAD CHART WITH TYRES CLAMP MODEL TC 08.63



# STANDARD ATTACHMENTS



Winch



Hook



Tyre handler



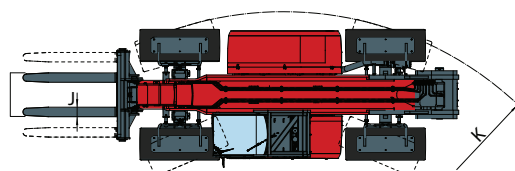
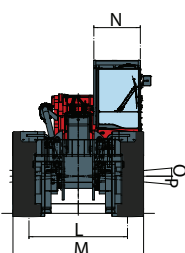
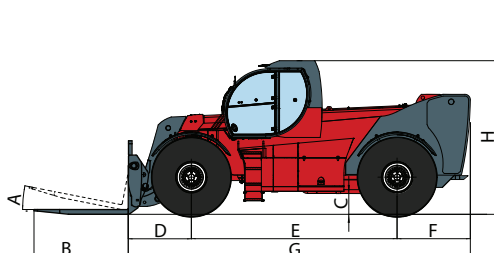
Cylinder handler



Collis handler

# MACHINE DIMENSIONS

HTH 16.10



B: 1500 C: 440 D: 1150 E: 4000 F: 1230 G: 6380 H: 3100 J: 200 K: 5060 L: 2020 M: 2550 N: 1050