

# RTH

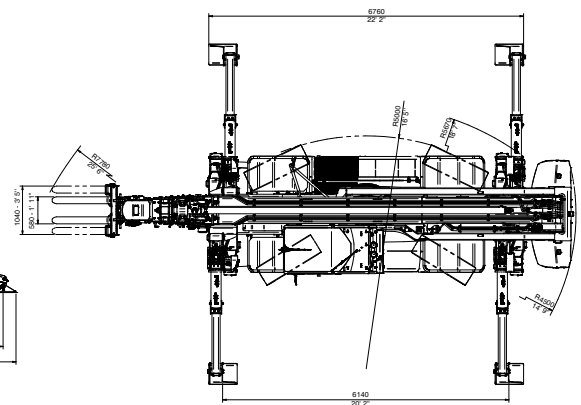
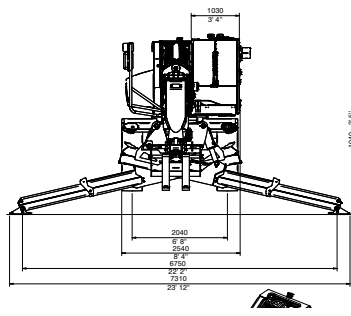
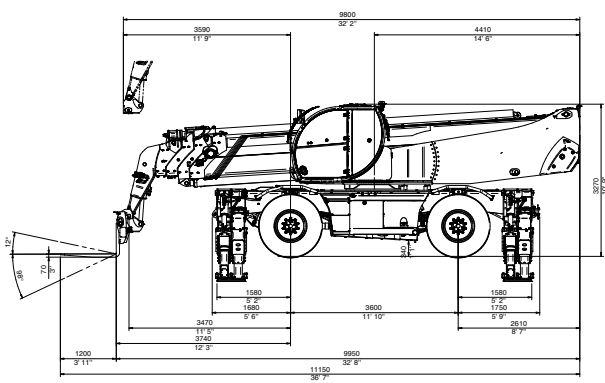
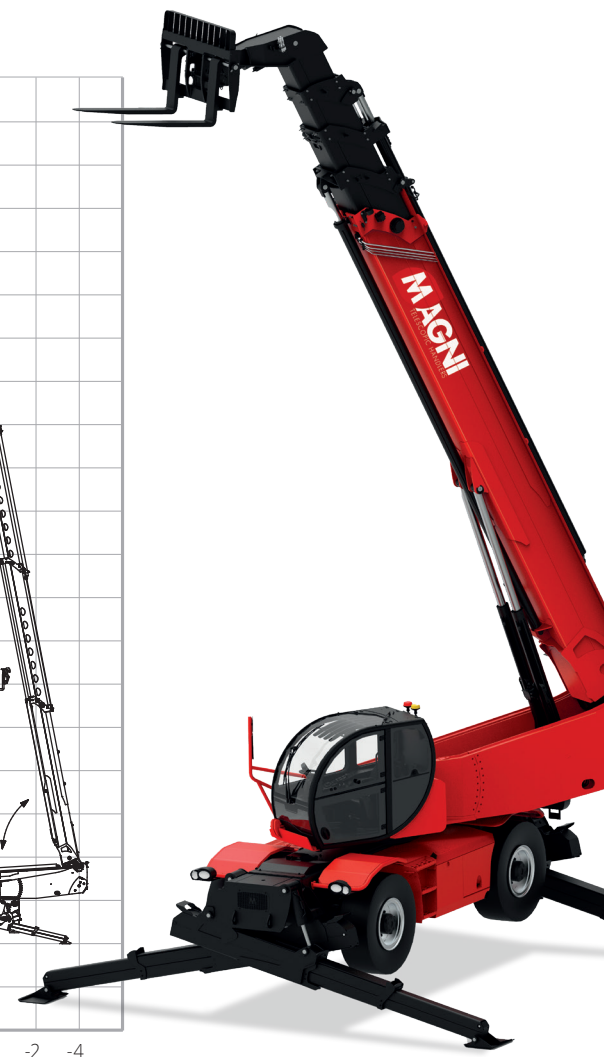
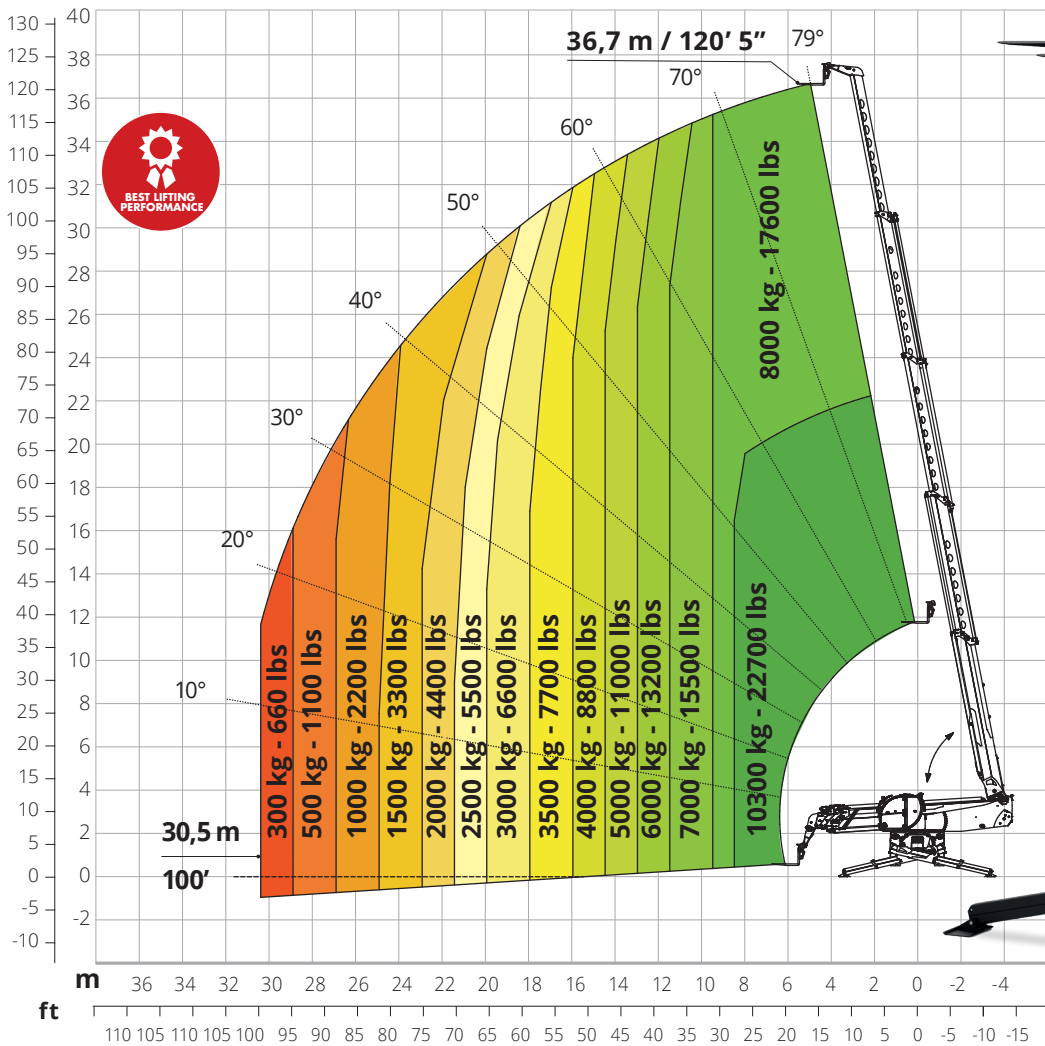


Model available from September 2023  
Order intake from February 2023

# 10.37

**PRELIMINARY**

**360° Load chart on fully extended stabilizers**



# RTH 10.37

PRELIMINARY

	Rotatingy telescopic handler	RTH 10.37	
<b>Machine model</b>	Maximum lifting capacity	10,300 kg / 22,700 lbs	
	Maximum reach	30,5 m / 100'	
	Maximum lifting height	36,7 m / 120' 5"	
	Rotation	360° (continuous)	
	<b>Stabilizers</b>	Type	Scissors Stabilizers with single telescopic extension (Magni patented)
Commands		Independent or combined	
<b>Engine</b>	Type	<b>Volvo TAD 583 VE Stage V</b>	<b>Volvo TAD 552 VE Stage IIIA</b>
	Rated Power	175 kW (238 hp) @ 2,300 rpm	160 kW (218 hp) @ 2,200 rpm
	Maximum torque	975 Nm @ 1,380 rpm	910 Nm @ 1,450 rpm
	Displacement	5130 cm <sup>3</sup>	
	Cylinders	4 in linea	
	Engine configuration	Turbocharged direct injection diesel	
	Cooling System	Water – Intercooler	
	N. batteries	2 x 12 V	
	Battery type	SHD	
Batteries capacity	1200 A-190 Ah		
<b>Transmission</b>	Type	Hydraulic	
	Maximum pressure	480 bar	
	Gearbox	2 speeds forward-reverse	
<b>Axles and brakes</b>	Type	Axles with planetary gearboxes	
	Front axle	Oscillating, steering with levelling +/-8°	
	Rear axle	Oscillating and steering with hydraulic locking	
	N. steering weels	4WD	
	Steering types	Front/Round/Crab	
	Service brake	Hydraulically operated wet multi-disk brakes on each axle	
	Parking brake	Hydraulic with negative action	
	Tyre sizes	17,5 R25	
<b>Performance</b>	Max. travel speed	25 km/h	
	Drawbar pull	152 kN	
	Gradeability	43%	
	Turning circle (at forks)	8.230mm / 27'	
<b>Weights</b>	Total unladen	33,800 kg / 74,516 lbs	
	Front axle unladen (boom retracted and lowered)	14,100 kg / 31,085 lbs	
	Rear axle unladen (boom retracted and lowered)	19,700 kg / 43,431 lbs	
<b>Tank and system capacities</b>	Diesel fuel tank	234 l / 62 US gal	234 l / 62 US gal
	AdBlue	10 l / 2.6 US gal	/
	Hydraulic fluid	260 l / 69 US gal	260 l / 69 US gal
	Engine oil	16 l / 4 US gal	16 l / 4 US gal
	Cooling liquid	40 l / 10.5 US gal	40 l / 10.5 US gal
<b>Hydraulic circuit for movements</b>	Circuit type	Load sensing	
	Service pump	Variable displacement piston pump	
	Max hydraulic capacity	170 l/min	
	Max. working pressure	350 bar	
	Distributor for boom and turret movements	SIL 2 electro-proportional valve	
	Movements control	2 no. two-axis Danfoss joysticks with deadman safety device	
<b>Standards met</b>	EN 1459-2: concerning standards for slewing variable-reach trucks EN 280 / EN 280-1: concerning standards for mobile elevating work platforms FOPS Level 2 / ROPS EU 2016/1628: concerning engine emissions standards		

The data in this brochure are informative and subject to change without notice. All Pictures shown are for illustration purpose only. Actual product may vary.