

RTH

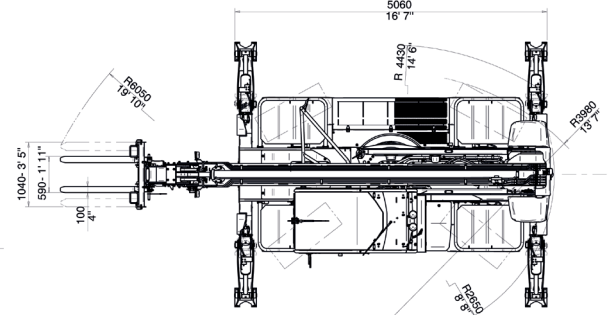
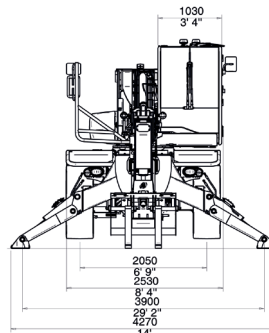
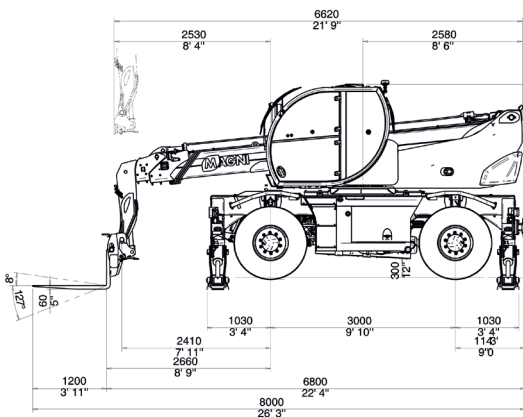
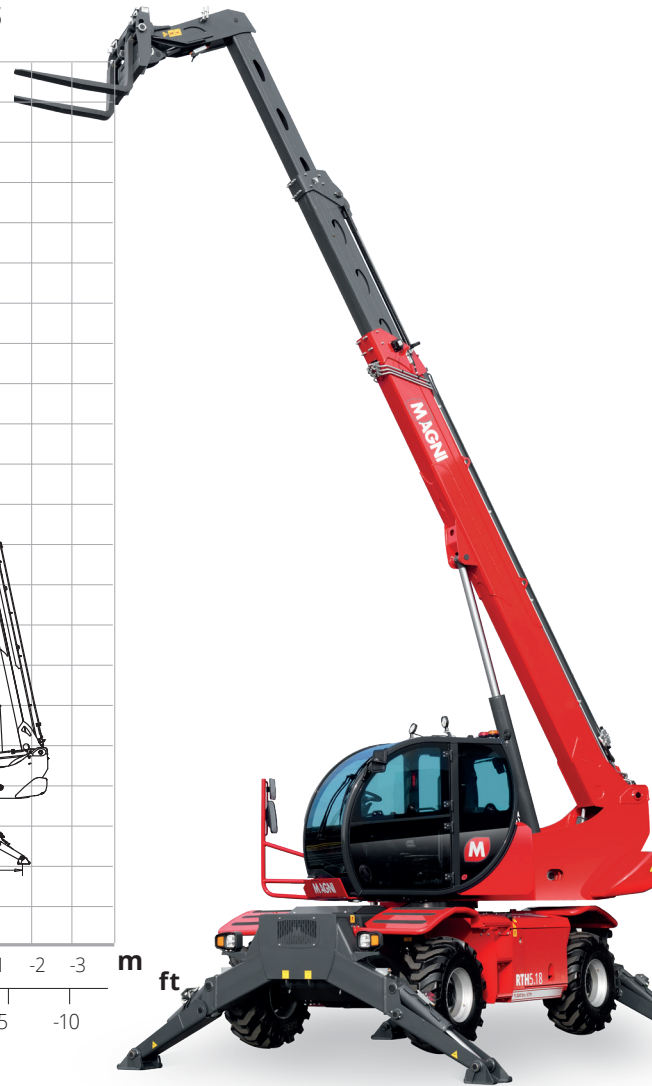
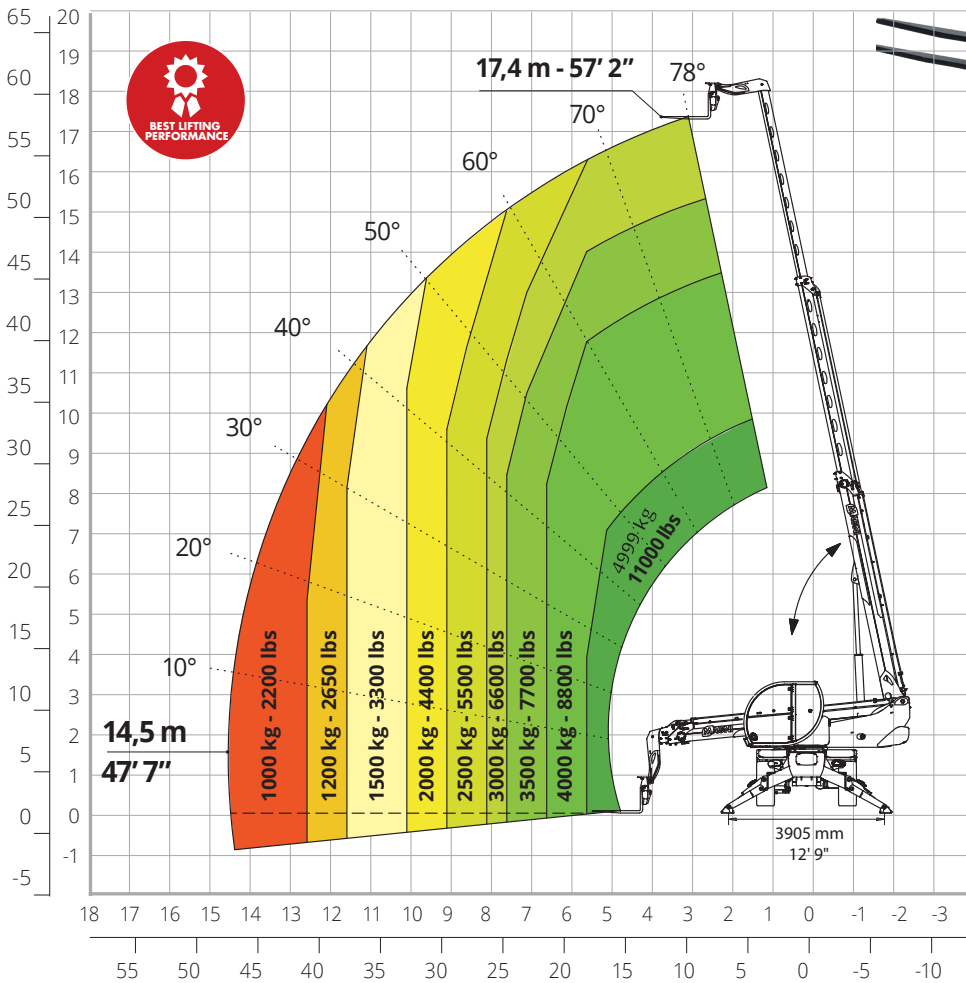


Model available from September 2023
Order intake from February 2023

5.18

PRELIMINARY

360° Load chart on fully extended stabilizers



RTH 5.18

PRELIMINARY

Machine model	Rotating telescopic handler	RTH 5.18	
	Maximum lifting capacity	4.999 kg / 11,000 lbs	
	Maximum reach	14,5 m / 47' 7"	
	Maximum lifting height	17,4 m / 57' 2"	
	Rotation	400° (limited)	
Stabilizers	Type	Pivoting stabilizers	
	Commands	Independent or combined	
Engine	Type	Deutz TCD 3,6 L4 Stage V	Deutz TCD 3,6 L4 EDG Stage IIIA
	Rated Power	55,4 kW (75,3 hp) @ 2,200 rpm	
	Maximum torque	405 Nm a 1,300 rpm	390 Nm a 1,300 rpm
	Displacement	3,620 cm ³	
	Cylinders	4 in line	
	Engine configuration	Turbocharged direct injection diesel	
	Cooling System	Water - Intercooler	
	N. batteries	2 x 12 V	
	Battery type	SHD	
	Batteries capacity	1,200 A-190 Ah	
Transmission	Type	Hydrostatic	
	Maximum pressure	480 bar	
	Gearbox	Dropbox, 2 speeds forward-reverse	
Axles and brakes	Type	Axles with planetary gearboxes	
	Front axle	Oscillating, steering with levelling +/-8°	
	Rear axle	Oscillating and steering with hydraulic locking	
	N. steering weels	4WD	
	Steering types	Front/Round/Crab	
	Service brake	Hydraulically operated wet multi-disk brakes on each axle	
	Parking brake	Hydraulic with negative action	
	Tyre sizes	445/65 R19,5	
Performance	Max. travel speed	25 km/h	
	Drawbar pull	51 kN	
	Gradeability	51%	
	Turning circle (at forks)	6,060 mm / 19' 10"	
Weights	Total unladen	14,400 kg / 31,745 lbs	
	Front axle unladen (boom retracted and lowered)	6,300 kg / 13,890 lbs	
	Rear axle unladen (boom retracted and lowered)	8,100 kg / 17,855 lbs	
Tank and system capacities	Diesel fuel tank	175 l / 46 US gal	175 l / 46 US gal
	AdBlue	/	/
	Hydraulic fluid	165 l / 43.5 US gal	165 l / 43.5 US gal
	Engine oil	9 l / 2.3 US gal	9 l / 2.3 US gal
	Cooling liquid	20 l / 5.2 US gal	20 l / 5.2 US gal
Hydraulic circuit for movements	Circuit type	Load sensing	
	Service pump	Variable displacement piston pump	
	Max hydraulic capacity	95 l/min	
	Max. working pressure	350 bar	
	Distributor for boom and turret movements	SIL 2 electro-proportional valve	
	Movements control	2 no. two-axis Danfoss joysticks with deadman safety device	
Standards met	EN 1459-2: concerning standards for slewing variable-reach trucks EN 280 / EN 280-1: concerning standards for mobile elevating work platforms FOPS Leve 2 / ROPS EU 2016/1628: concerning engine emissions standards		