



MINING &
QUARRYING



HEAVY
LOGISTICS

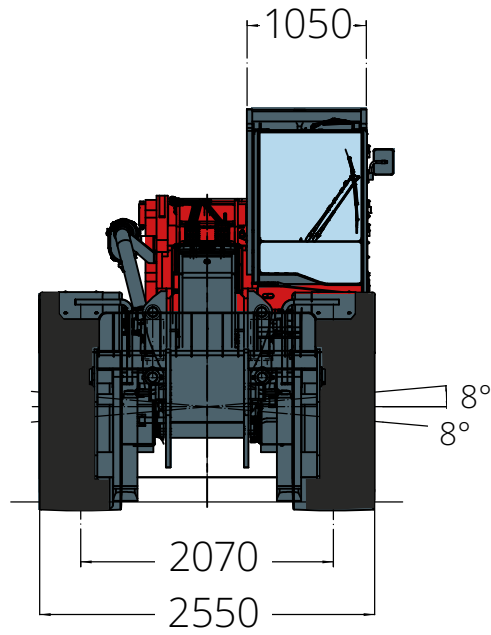


DEFENCE

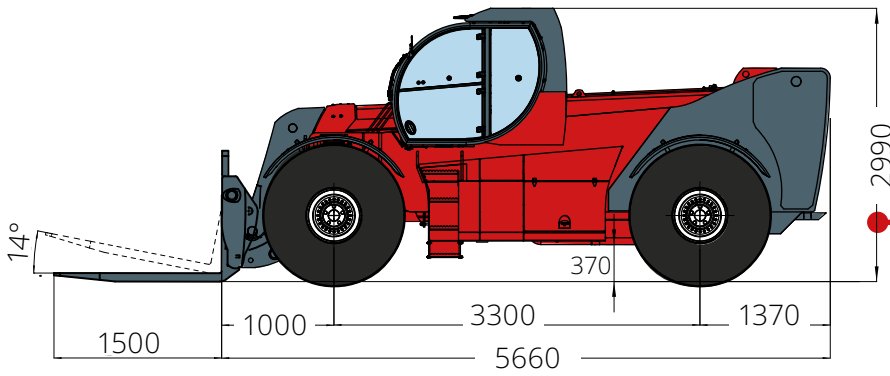
HTH
12.10



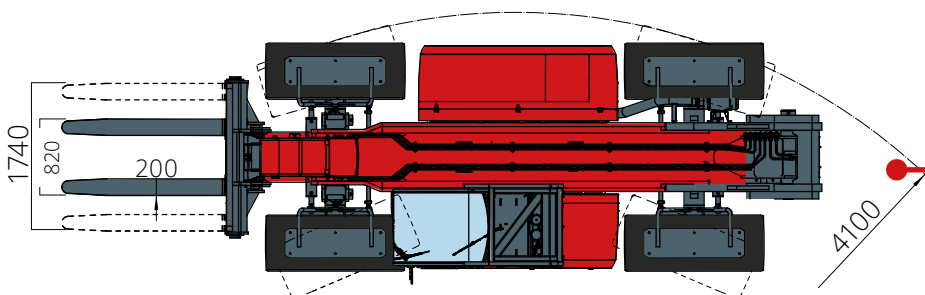
DIMENSIONS (mm)



FRONT
view

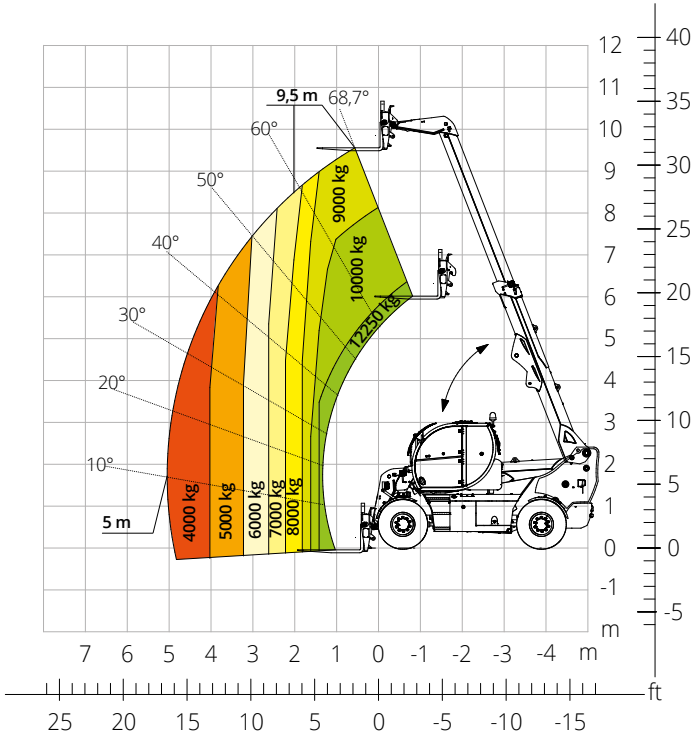


SIDE
view

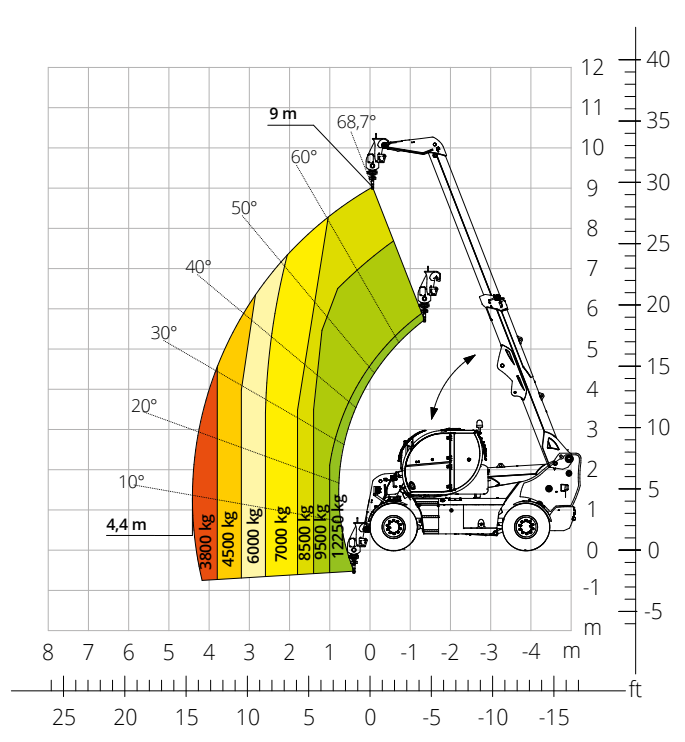


TOP
view

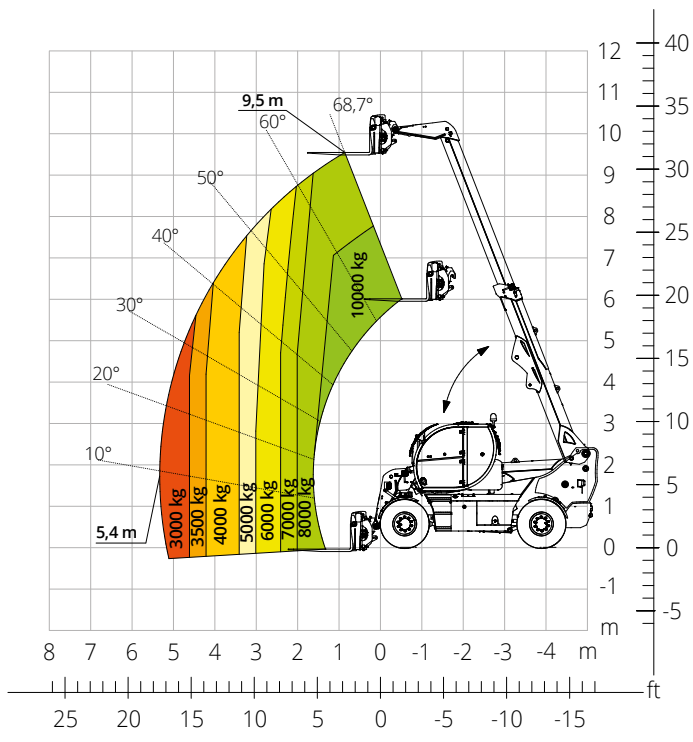
Load chart
FRONT ATTACHMENT ON TYRES



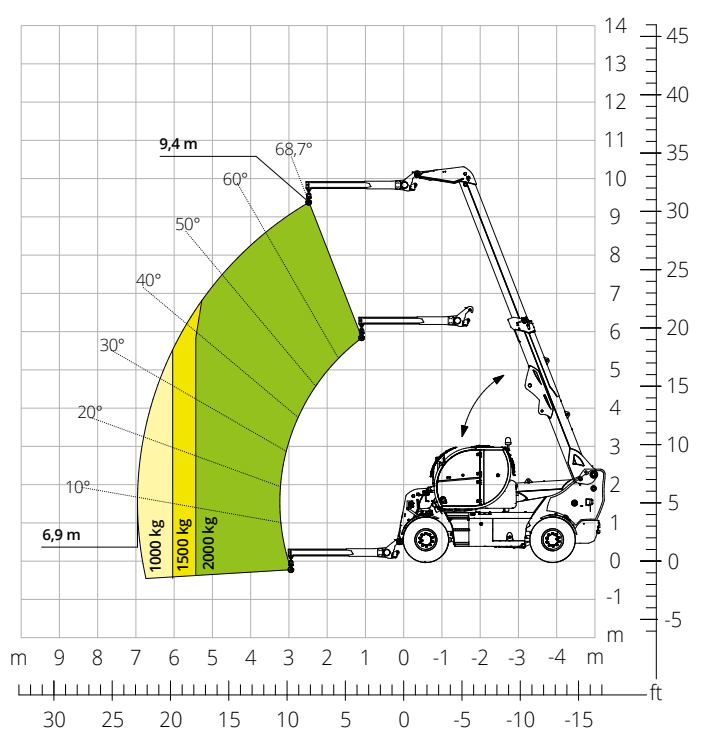
Load chart with
HOOK, 13,000 kg
ATT-05-013



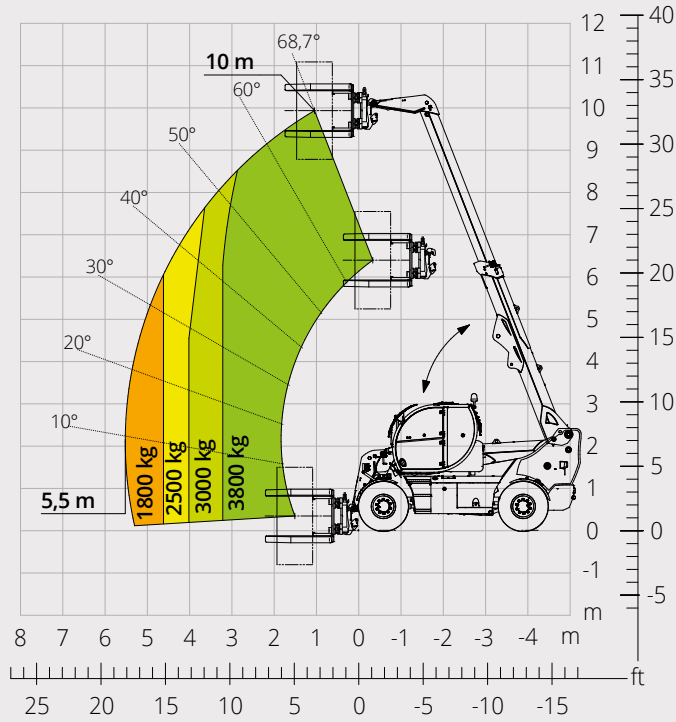
Load chart with
FRONT ATTACHMENT ON TYRES
ATT-03-019



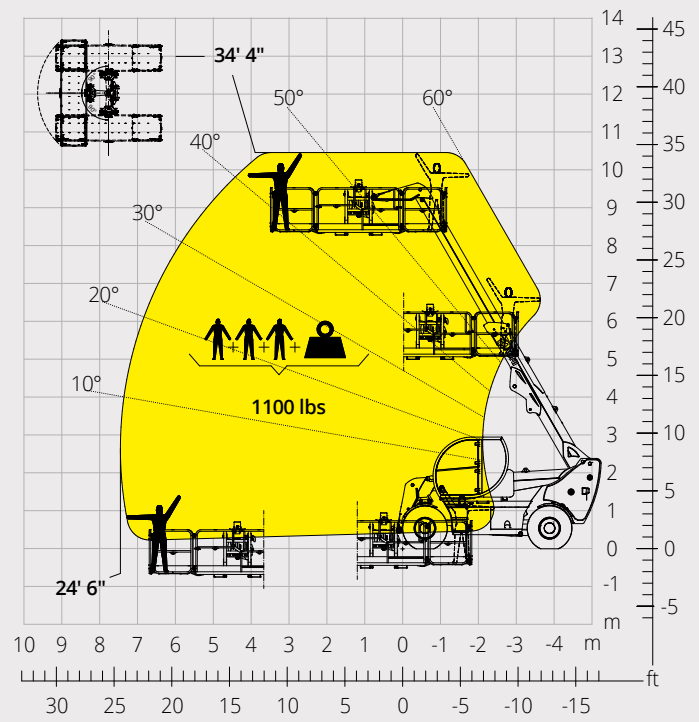
Load chart with
JIB 2,000 kg
ATT-04-015



Load chart with
TYRE HANDLER, 3,800 kg
ATT-06-005



Load chart with
ROTATING EXTENDABLE PLATFORM, 500 kg
ATT-01-016



Machine model	Maximum lifting capacity	12,000 kg
	Load center	600 mm
	Maximum lifting height	9,50 m
	Maximum reach	5,00 m
	Type	Deutz TCD 3,6 L4 - Stage V Deutz TCD 3,6 L4 - Stage IV Deutz TCD 3,6 L4 EDG - Stage IIIA
Engine	Rated power	100 kW (136 hp) @ 2,200 rpm
	Maximum torque	500 Nm @ 1,600 rpm
	Displacement	3.6 l
	Cylinders	4 in line
	Engine configuration	Turbocharged direct injection diesel
	Cooling system	Water - intercooler
	Cab	FOPS-ROPS tested hermetic cab with protectors
Front, rear and upper wiper		•
Headlights for road circulation, flashing beacon		•
Rear view mirrors		•
Heating - Air conditioning		•
Controls	Multi-function electro proportional joystick	•
	Heavy Duty with epicyclic reduction	•
	One steering cylinders each axle	•
	Levelling correction front axle	+ 8° on the right and + 8° on the left
Axles and brakes	3 types of steering	- with front steering - with round steer - with crab steering
	Tilting rear axle	•
	Hydraulic servo-assisted multidisc brake in oil bath on both axles, with double circuit	•
	Negative parking brake	•
	Tyre size	445/65 - R22,5 ** two each axle, driving and steering
	Performance	Max. travel speed
Drawbar pull		84 kN
Gradeability		66%
Turning radius (at wheels)		4,100 mm
Weights	Total unladen	13,100 kg
	Front axle unladen (boom retracted and lowered)	4,600 kg
	Rear axle unladen (boom retracted and lowered)	8,500 kg
Transmission	Hydrostatics	Rexroth / Danfoss
	Variable displacement hydrostatic pump with electronic control	•
	Variable displacement hydrostatic motor	One
	Gearbox	Gearbox with 2 speeds forward / reverse
Hydraulic circuit	Load sensing piston pump	•
	Circuit at 350 bar	•
	Proportional hydraulic electrovalve	Danfoss
	Suction and return line filters	•
	High pressure flexible hoses	•
Tanks capacities	Diesel fuel tank	195 l
	AdBlue*	10 l
	Hydraulic fluid	190 l
	Engine oil	9 l
	Cooliant	20 l
Safety	Electronic safety system which controls the load with definition of the lifted load, radius and comparison with the diagrams stored	•
	Block of aggravating movements of the load	•
	Safety valves on cylinders	•

The data given in this brochure are provided for information purposes and are subject to change without prior notice.

All images are purely guideline and might not give an exact representation of the product.

**the stated weight refers to the vehicle unladen with standard equipment and may vary depending on the chosen configuration.*

The standard machine configuration includes:

CAB

- The standard machine configuration includes:
- Comfort seat
- Adjustable steering column
- Analogue joypad
- Heating
- Air conditioning
- FM/AM radio with USB and Bluetooth connectivity
- USB Type-A (5 V) inputs

REAL TIME INFORMATION

- Touchscreen, 7"
- MCTS – Magni Combi Touch System on-board software
- Automatic RFID tools recognition system
- LMI – Load Moment Indicator
- Onboard and remote integrated diagnostics

TECHNICAL SPECIFICATIONS

- Q-Fit standard
- Provision for platform
- Two-line CAN BUS system
- Automatic front and rear wheel alignment
- Automatic parking brake
- Mechanical battery cut-off in engine compartment
- Electrical system: 24 V – IP67

SERVICE

- MyMagni by Trackunit connectivity system (3 years)
- Warranty: 24 months/2,000 hours