

# RTH

## 8.39

- **Totally renewed** machine control **software**
- Completely upgraded **dynamic load chart** display
- **Unrivalled** lifting **performance**
- **Hydraulic** and **electric** completely revised to facilitate After Sales service

### MAIN SECTORS

---



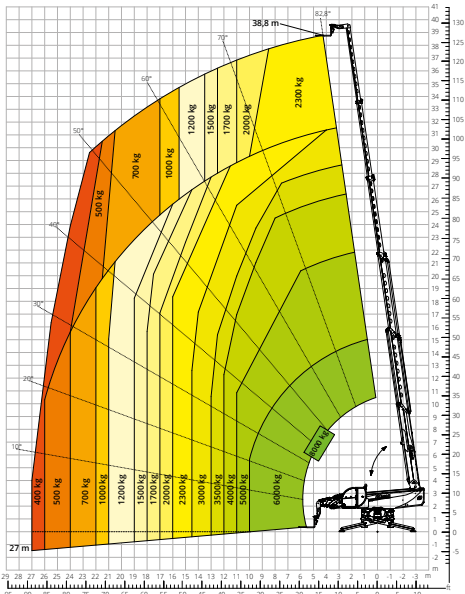
MANUFACTURING



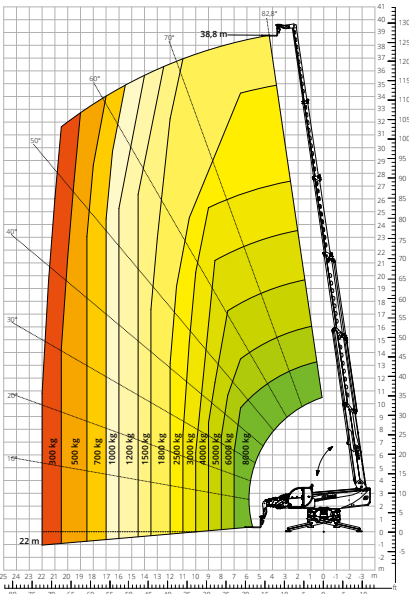
CONSTRUCTION



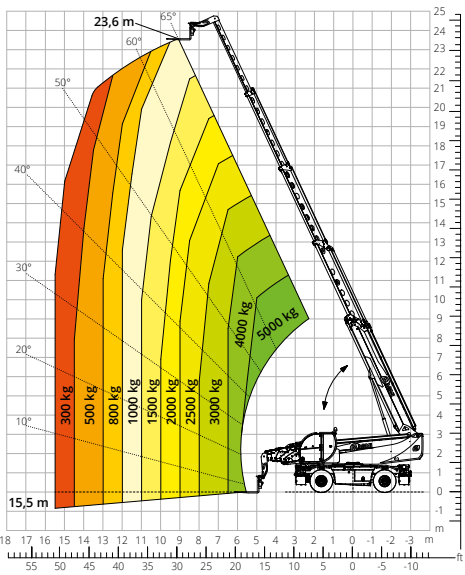
Load chart for  
**FULLY EXTENDED STABILISERS (360°) - M1**



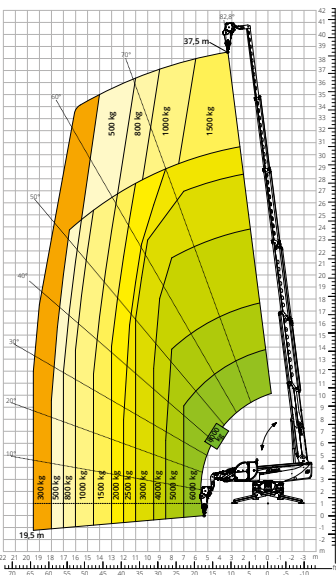
Load chart for  
**FULLY EXTENDED STABILISERS (360°) - M2**



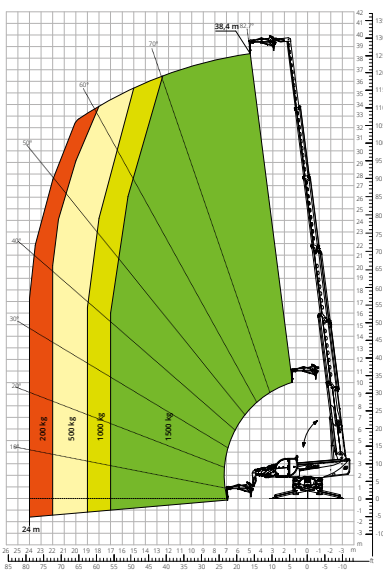
Load chart  
**FOR FRONT ATTACHMENT ON TYRES**



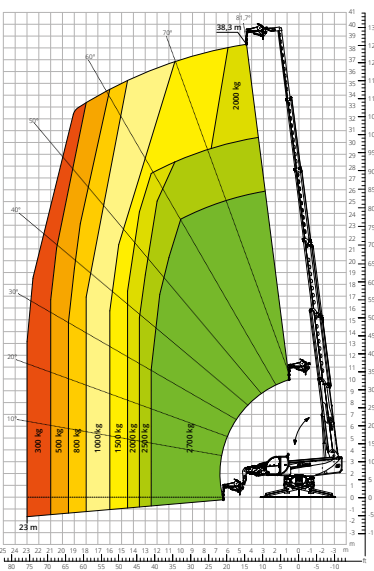
Load chart for  
**WINCH 6,000 kg - M1**



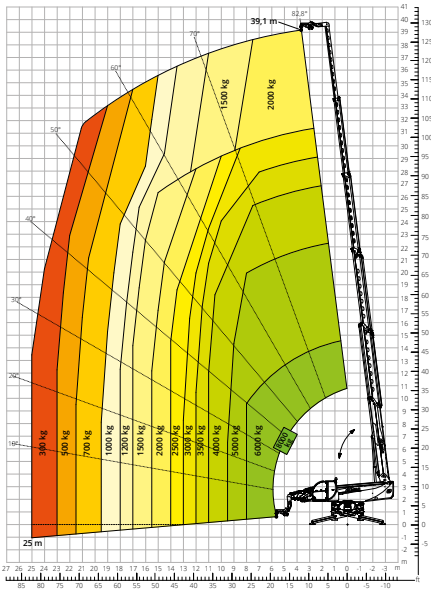
Load chart for  
**JIB WITH WINCH 1,500 kg**



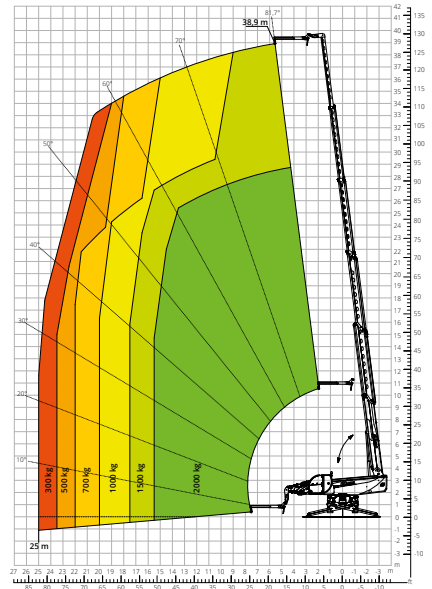
Load chart for  
**JIB WITH WINCH 2,700 kg**



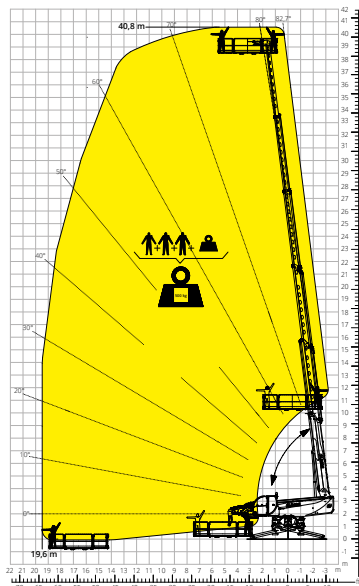
Load chart for  
**HOOK 8,000 kg**



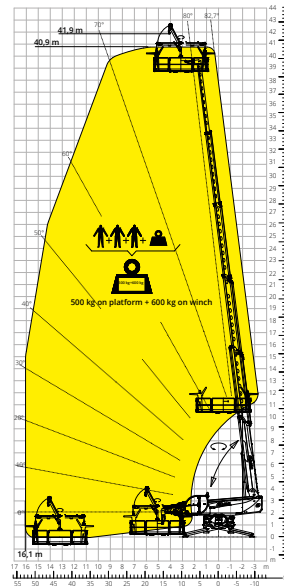
Load chart for  
**JIB 2,000 kg**



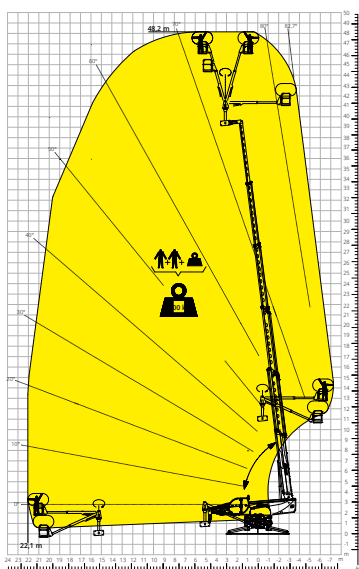
Load chart for  
**ROTATING EXTENDABLE PLATFORM 500 kg**



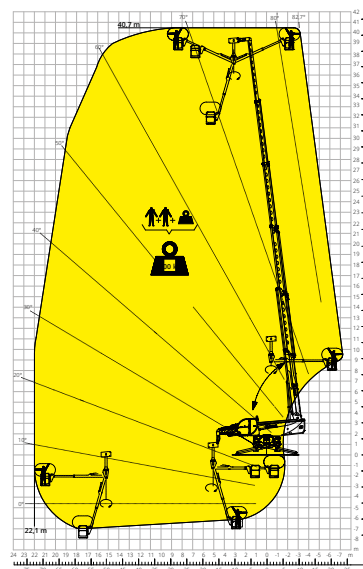
Load chart for  
**PLATFORM 500 kg WITH WINCH 600 kg**



Load chart for  
**OVER UNDER PLATFORM 200 kg - POSITIVE**

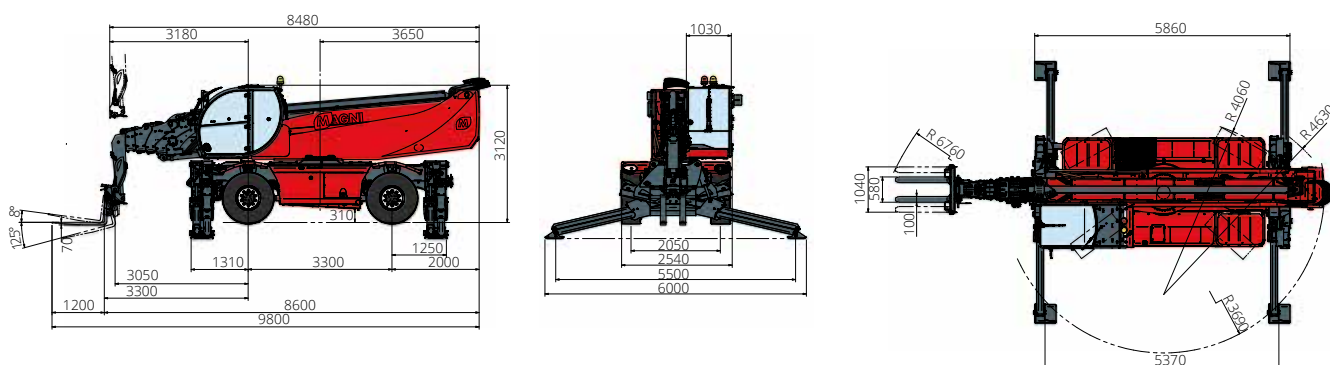


Load chart for  
**OVER UNDER PLATFORM 200 kg - NEGATIVE**



# RTH 8.39

	Rotating telescopic handler	RTH 8.39	
<b>Machine model</b>	Maximum lifting capacity	8.000 kg (center of gravity 600 mm)	
	Maximum lifting height	38,80 m	
	Rotation	360° (continuous)	
	Type	<b>Volvo TAD 583 VE Stage V</b>	<b>Volvo TAD 552 VE Stage IIIA</b>
<b>Engine</b>	Rated power	175 kW (238hp) at 2.300 rpm	160 kW (218 hp) at 2.200 rpm
	Maximum torque	975 Nm at 1.380 rpm	910 Nm ta 1.450 rpm
	Displacement	5,130 cm <sup>3</sup>	
	Cylinders	4 in line	
	Engine type	Turbocharged direct injection diesel	
	Cooling system	Water – intercooler	
	<b>Transmission</b>	Type	Hydraulic
Model		Danfoss / Rexroth	
Maximum pressure		480 bar	
Cilindrate		Electronically controlled variable displacement pump Variable displacement motor	
Gearbox		2 speeds forward-reverse	
<b>Axles and brakes</b>		Type	Axles with planetary gearboxes
	Front axle	Oscillating and steering with levelling, +/-8°	
	Rear axle	Oscillating and steering with hydraulic lock	
	Service brake	Hydraulically operated wet multi-disk brakes on each axle	
	Parking brake	Hydraulic with negative action	
	Tyre sizes	445/65 R22.5	
<b>Performance</b>	Max. travel speed	40 km/h	
	Drawbar pull	152 kN	
	Gradeability	65%	
	Turning radius (at forks)	6.970 mm	
<b>Weights</b>	Total unladen*	24.000 kg	
	Front axle unladen (boom retracted and lowered)*	12.000 kg	
	Rear axle unladen (boom retracted and lowered)*	12.000 kg	
	<b>Tank and system capacities</b>	Diesel fuel tank	270 l
AdBlue		40 l	/
Hydraulic fluid		220 l	220 l
Engine oil		16 l	16 l
Coolant		40 l	40 l
<b>Hydraulic circuit for movements</b>		Circuit type	Load sensing
	Service pump	Danfoss / Rexroth – Variable displacement	
	Max. working pressure	350 bar	
	Distributor for boom and turret movements	Danfoss – SIL 2 electro-proportional valve	
	Distributor for stabilisers	Bosch Rexroth – Electro-hydraulic actuators	
	Movements control	2 no. two-axis Danfoss joysticks with deadman safety device Managed via CAN bus	
<b>Standards met</b>	2006/42/EC: EU Machinery Directive		
	2016/1628: EU Regulation on the emissions of stage V engines		
	EN 1459-X: Relating to standards on the safety requirements for variable reach machines		
	EN 280/EN 280-1/EN 280-2: standards relating to mobile elevating work platforms (if available)		
	ROPS/level 2 FOPS: relating to the standards for protective structures		



The data given in this brochure are provided for information purposes and are subject to change without prior notice. All images are purely guideline and might not give an exact representation of the product. \*the stated weight refers to the vehicle unladen with standard equipment and may vary depending on the chosen configuration