

RTH

6.31 EC



CONSTRUCTION



LOGISTICS

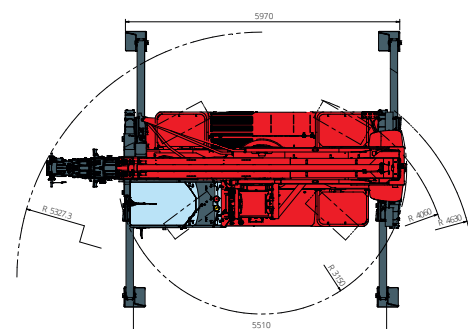
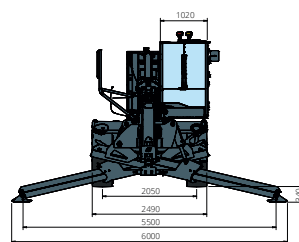
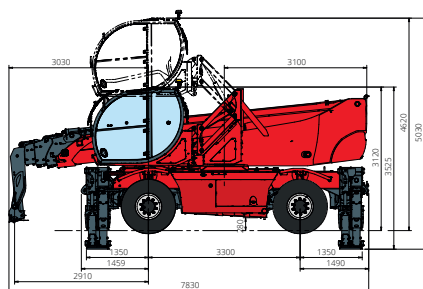
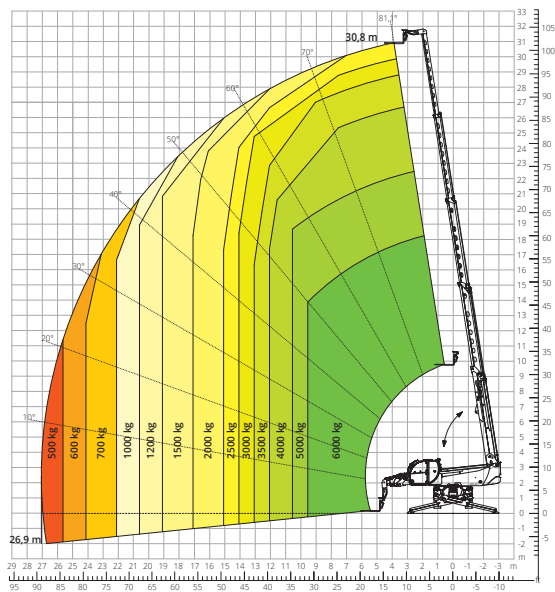


EVENTS
AND FILM



FORESTRY

Load chart on fully
extended stabilizers



Machine model	Rotating telescopic handler	RTH 6.31 EC	
	Maximum lifting capacity	6,000 kg	
	Maximum lifting height	30.80 m	
	Maximum reach	26.90 m	
	Rotation	360° (continuous)	
Stabilisers	Type	Scissor stabilisers with single telescopic extension (Magni patent)	
Engine	Model	Volvo TAD 582 VE Stage V	Volvo TAD 552 VE Stage IIIA
	Rated power	160 kW (218 hp) at 2,300 rpm	160 kW (218 hp) at 2,200 rpm
	Maximum torque	925 Nm at 1,380 rpm	910 Nm at 1,450 rpm
	Displacement	5,130 cm ³	
	Cylinders	4 in line	
	Engine type	Turbocharged direct injection diesel	
	Cooling system	Water – intercooler	
Transmission	Type	Hydraulic	
	Maximum pressure	480 bar	
	Gearbox	2 speeds forward-reverse	
Axles and brakes	Type	Axles with planetary gearboxes	
	Front axle	Oscillating and steering with levelling, +/-8°	
	Rear axle	Oscillating and steering with hydraulic lock	
	No. of steering wheels	4WS	
	Steering mode	Frontal/Concentric/Crab	
	Service brake	Hydraulically operated wet multi-disk brakes on each axle	
	Parking brake	Hydraulic with negative action	
	Tyre sizes	445/65 R22.5	
Performance	Max. travel speed	40 km/h (limited depending on the country of destination)	
	Drawbar pull	89 kN	
	Maximum mass towable on hook	5,000 kg	
	Gradeability	41%	
	Turning radius (at forks)	6,730 mm	
Weights	Total unladen*	23,700 kg	
	Front axle unladen (boom retracted and lowered)*	11,100 kg	
	Rear axle unladen (boom retracted and lowered)*	12,600 kg	
Tank and system capacities	Diesel fuel	270 l	270 l
	AdBlue	40 l	/
	Hydraulic fluid	160 l	160 l
	Engine oil	16 l	16 l
	Coolant	40 l	40 l
Hydraulic circuit for movements	Circuit type	Load sensing	
	Service pump	Variable displacement	
	Max. hydraulic flow rate	170 l/min	
	Max. boom head flow rate	75 l/min	
	Max. working pressure	350 bar	
	Distributor for boom and turret movements	SIL 2 electro-proportional valve	
Movements control	2 two-axis Danfoss joysticks with deadman safety device		
Standards met	2006/42/EC: EU Machinery Directive		
	2016/1628: EU Regulation on the emissions of stage V engines		
	EN 1459-X: Relating to standards on the safety requirements for variable reach machines		
	EN 280/EN 280-1/EN 280-2: standards relating to mobile elevating work platforms (if available)		
ROPS/level 2 FOPS: relating to the standards for protective structures			

The data given in this brochure are provided for information purposes and are subject to change without prior notice.

All images are purely guideline and might not give an exact representation of the product.

*the stated weight refers to the vehicle unladen with standard equipment and may vary depending on the chosen configuration.